

@properties

CHRISTIE'S
INTERNATIONAL REAL ESTATE

1125 LONGVALLEY ROAD, GLENVIEW



MACPHERSON
GROUP

LAUREN
COLLANDER
INTERIORS



LAUREN COLLANDER
INTERIORS

At **Lauren Collander Interiors**, we are artists who design custom homes that embody architectural balance, intentional living, and moments of unexpected delight. Driven by a passion for enhancing everyday life through design, we seek to understand each client's vision and translate it into thoughtfully curated spaces we seamlessly bring to life. For over 10 years, we have served clients nationwide—delivering custom designs while guiding every decision with clarity and purpose. With studios and talented designers in Naperville, Lake Forest, Roscoe Village, Gold Coast, and Denver, we are a magnetic, design-driven firm creating life-changing homes inspired by our clients' dreams.

Best in Houzz
2026

Best of Naperville
2024

Inc. 5000 Winner
Fastest Growing
Company

1125 Longvalley Road

Join us as we showcase a reimagined vision for this legacy home, honoring its architecture while elevating a refined way of living.

Set on expansive, rolling grounds with sweeping views of a private golf course, tranquil pond, and lush landscape beyond, this historic 1920s estate offers a rare opportunity to own a true retreat, just moments from the city. Surrounded by mature trees and layered natural beauty, the property unfolds like a private oasis, where every window frames a new, breathtaking perspective.

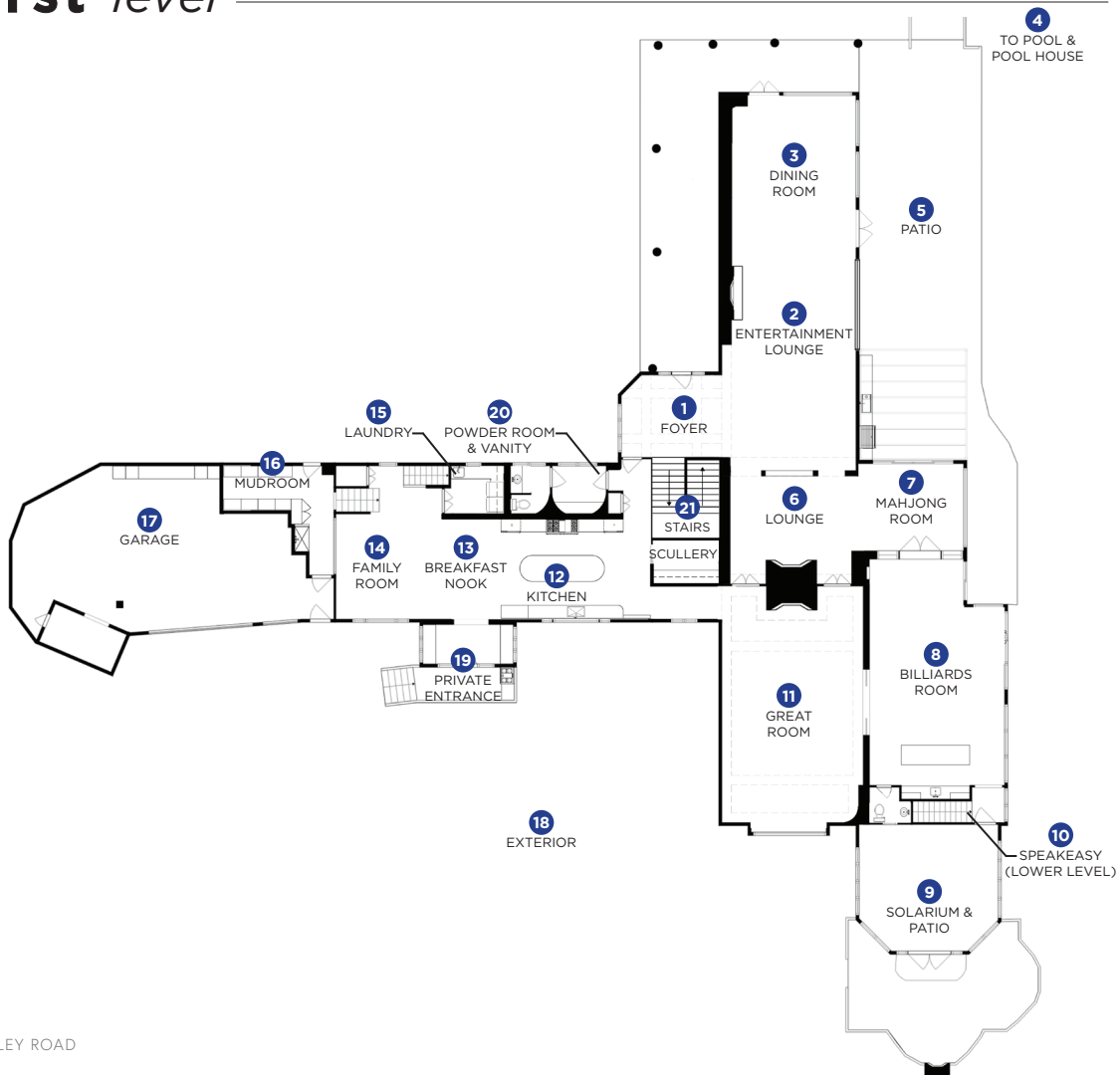
The home itself is rich with character, blending timeless craftsmanship with thoughtfully curated updates that support modern living. Classic details, warm wood flooring, tailored millwork, and original architectural elements, create a sense of heritage and permanence, while expansive entertaining spaces invite both intimate gatherings and large-scale celebrations. From the dramatic dining experience to the layered lounge areas and light-filled gathering spaces, every room is designed to feel both elevated and effortlessly livable.

Outdoors, the lifestyle continues. A beautifully designed pool and surrounding terrace create a resort-like setting for summer days, while the pond and open green space offer a sense of calm and connection to nature year-round. Whether hosting under the stars, enjoying quiet mornings overlooking the water, or taking in the ever-changing views of the golf course, the property delivers a level of privacy and serenity that is truly unmatched.

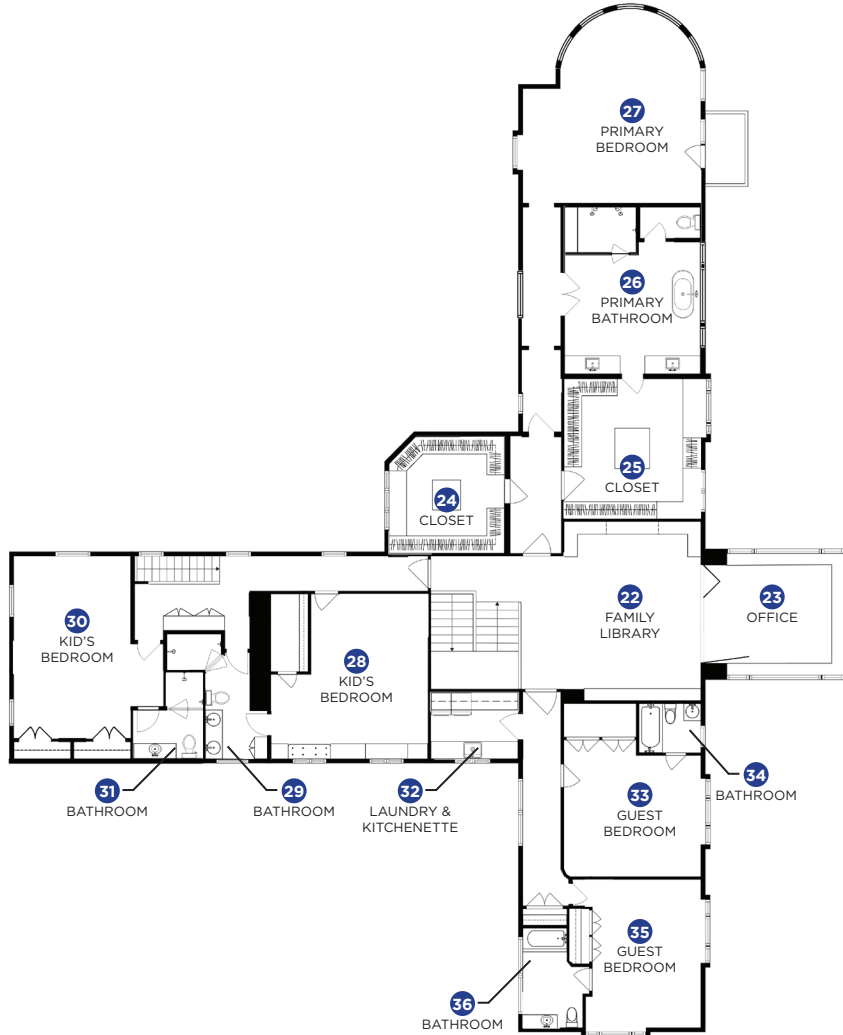
This is more than a home, it's a legacy property. A place where timeless elegance, natural beauty, and modern comfort come together to create an experience that feels both grounded and extraordinary.

welcome **home**

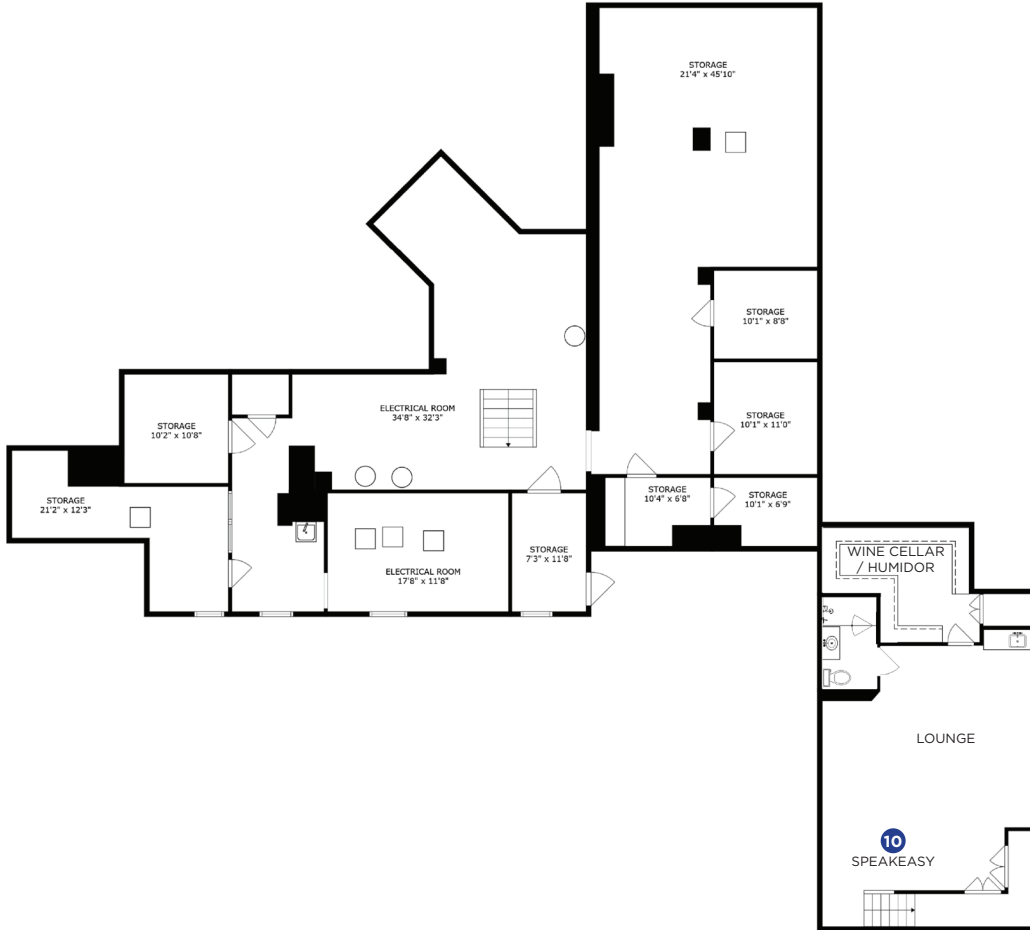
first level



second level



lower level



Tour *Experience*

Welcome. We're so glad you're here!

This book is designed to guide you through each space and help you fully experience the design vision. Think of it as your personal companion as you move through the house.

How to Navigate the Tour:

- Follow the numbered floor plan to guide your path through the home.
- Each room corresponds to a location on the plan, with curated materials, finishes, and design details to explore.
- Use this guide for additional context and insight into the Interior Design vision, as created by Lauren Collander Interiors.

What You Will Experience:

Throughout the home, you will see a layered approach to design, where architecture, furnishings, materials, and detail work together to create a cohesive and livable environment. Each space has been thoughtfully developed to reflect both function and feeling, offering a glimpse into what's possible.

A Note as You Explore:

This is a conceptual vision designed to help you imagine the full potential of the home. Many of the selections and ideas can be tailored, refined, or reimaged to suit your personal style and needs.

If something catches your eye, we'd love to talk more about how we can help it come to life.

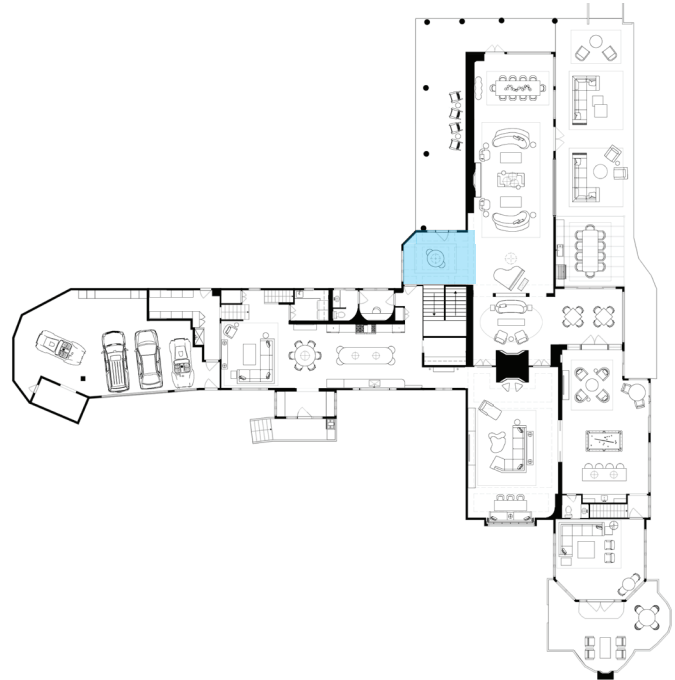
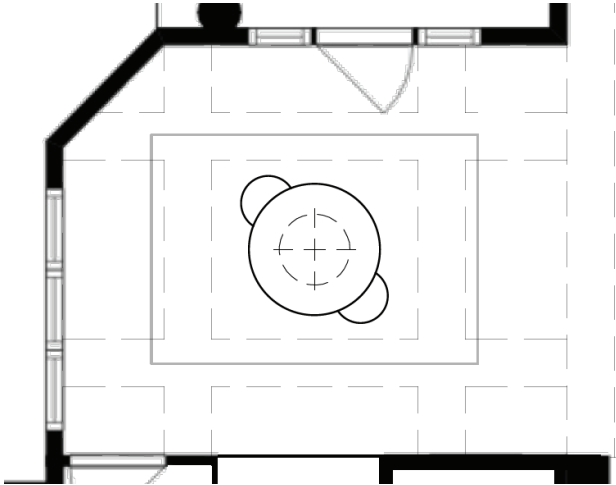
Enjoy the tour,



Lauren Collander.

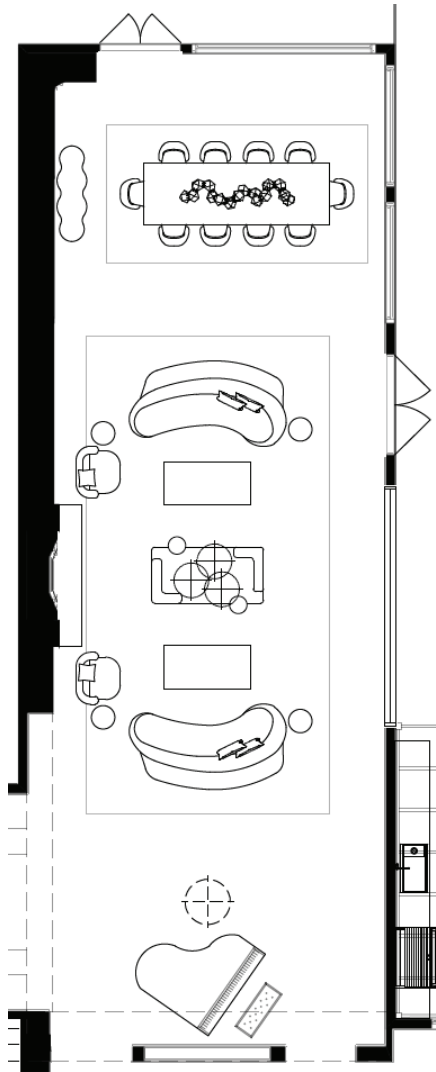
1. FOYER

The arrival to the home is refined and welcoming, with classic wood millwork wrapping the walls and ceiling. Curated furnishings, and soft lighting create an elevated first impression, while natural light and framed views beyond subtly guide movement deeper into the home.



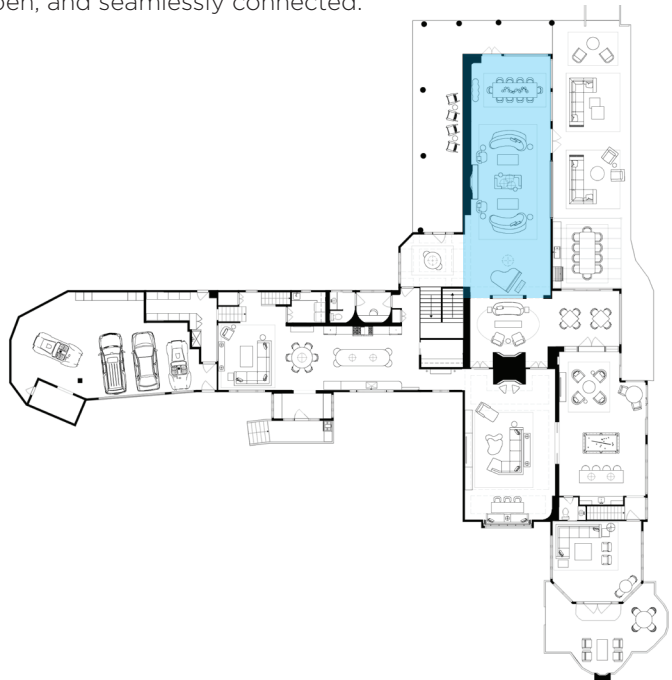


1. FOYER



2. ENTERTAINMENT LOUNGE & 3. DINING ROOM

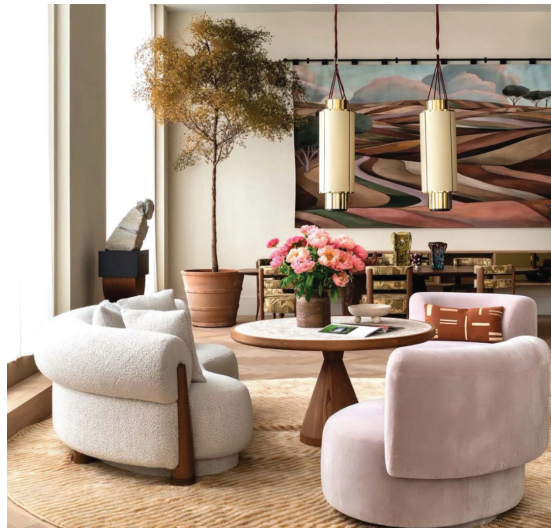
The grand lounge, framed by sweeping views, offers a striking first impression of the home and hints at what unfolds beyond. Sculptural seating and a statement stone fireplace anchor the space, while the dining area is elevated by dramatic lighting and the home's exceptional views. Rich wood tones, soft upholstery, and layered textiles bring warmth, while expansive windows keep the space light, open, and seamlessly connected.





RENDERING

2. ENTERTAINMENT LOUNGE & 3. DINING ROOM



2. ENTERTAINMENT LOUNGE

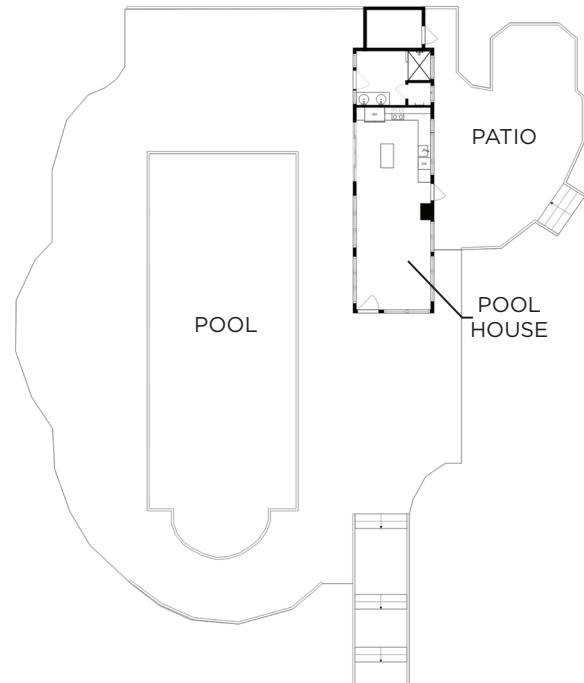


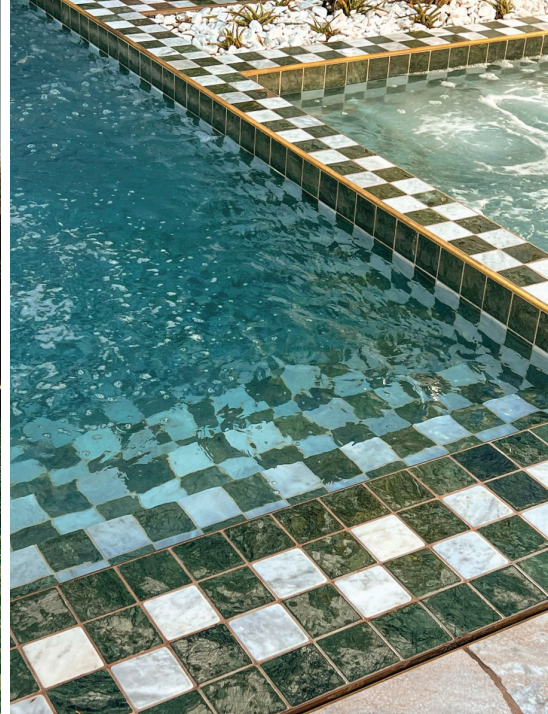
RENDERING

3. DINING ROOM

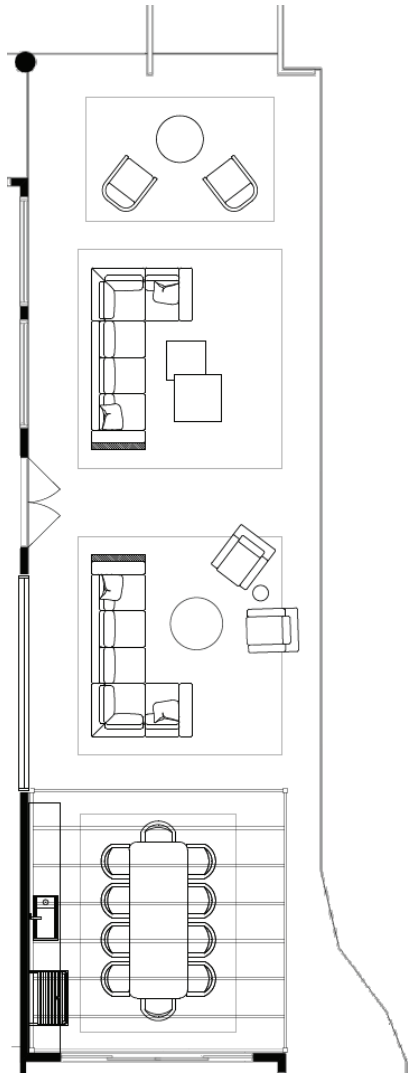
4. POOL & POOL HOUSE

Architecture softens into landscape, and time begins to slow. Water becomes both a visual anchor and a sensory experience, reflecting light, sky, and the quiet rhythm of the day. The pool house offers a layered retreat designed for effortless gathering and quiet escapes. Inspired by the sun-soaked glamour and effortless sophistication of Slim Aarons' iconic poolside party.



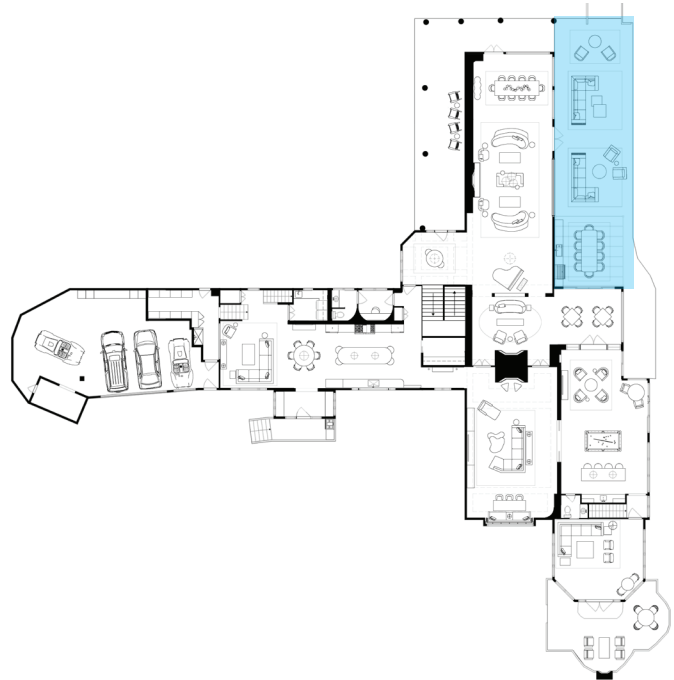


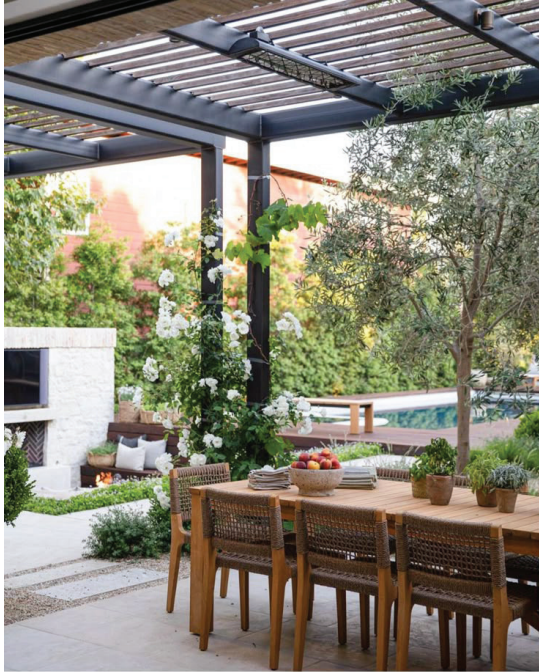
4. POOL & POOL HOUSE



5. PATIO

A seamless extension of the interior lifestyle, grounded in natural materials and relaxed sophistication. Layered seating zones, a new outdoor kitchen, and thoughtful furniture placement create a space that feels both curated and effortless, perfectly balancing structure with comfort.

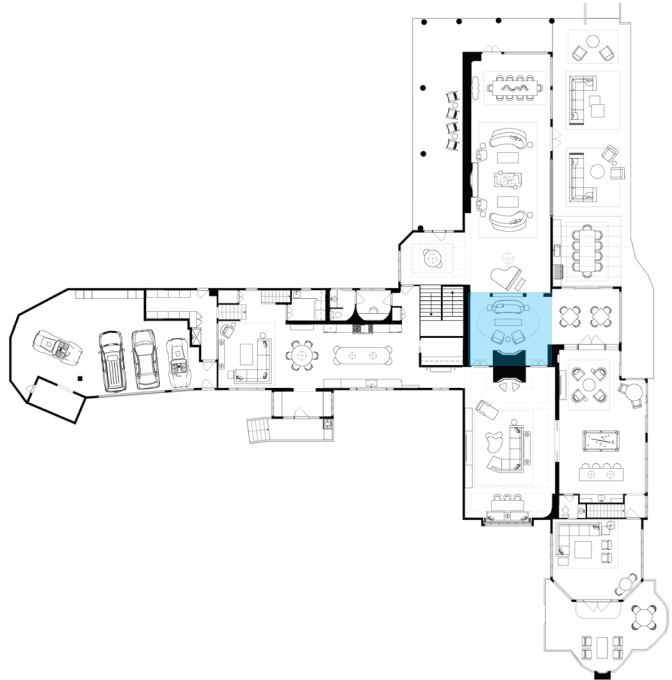
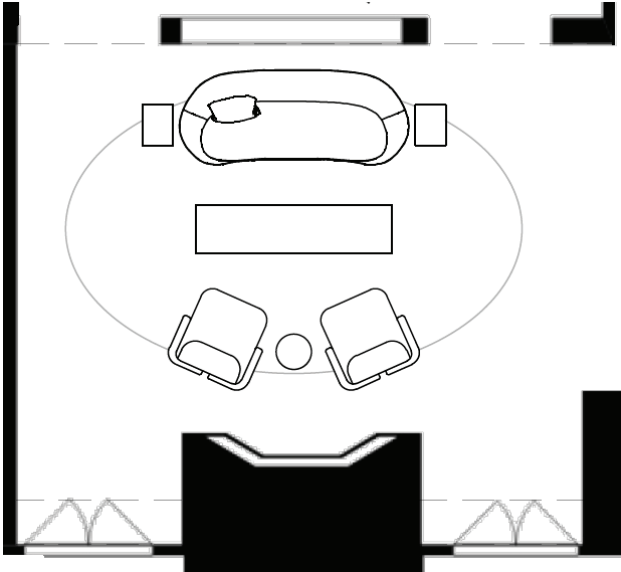




5. PATIO

6. LOUNGE

Imagine a moody, jewel-toned retreat rich in texture and personality. Curved silhouettes, saturated hues, and an architectural screen wall create depth and intimacy. Statement wall treatments and tailored upholstery elevate the space into a bold, expressive moment.





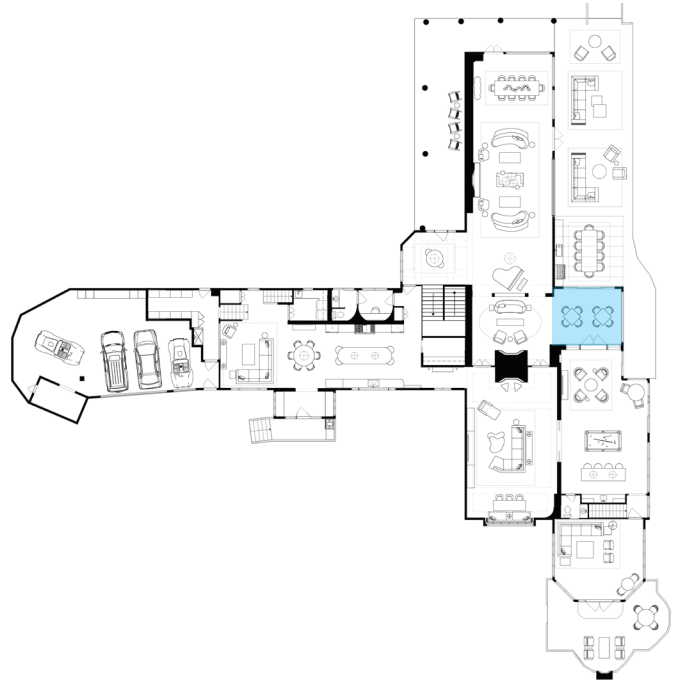
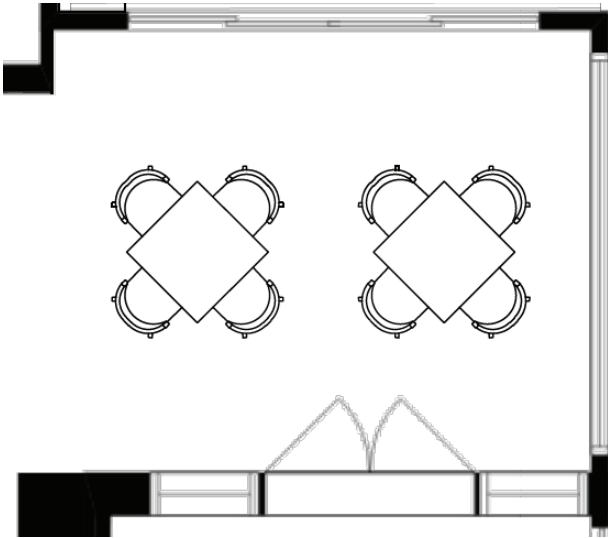
6. LOUNGE

17 | 1125 LONGVALLEY ROAD

LAUREN
COLLANDER
INTERIORS

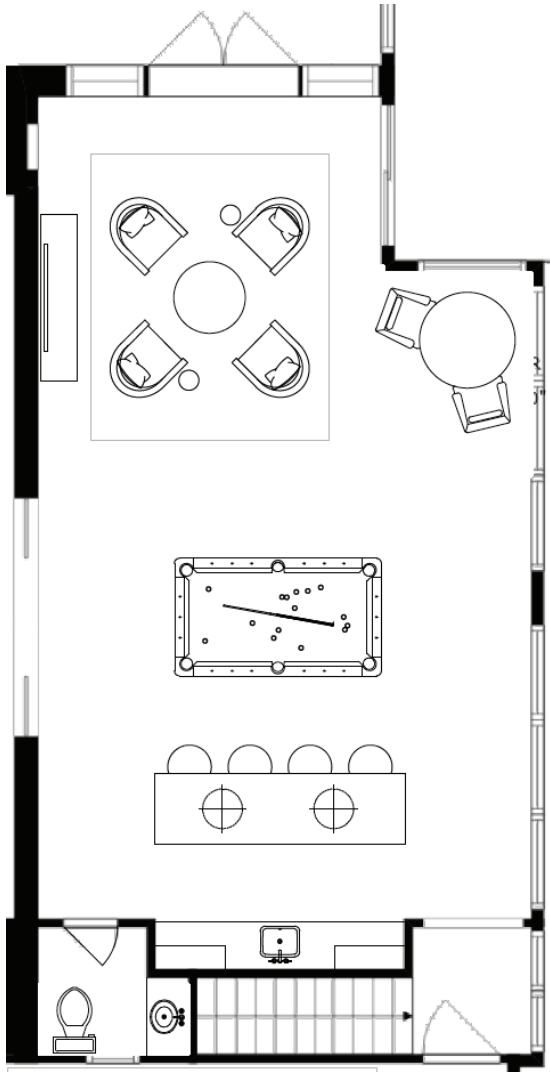
7. MAHJONG ROOM

Playful yet refined, this space pairs vibrant accents with clean, tailored detailing. Crisp lines, graphic patterns, and soft natural light create a balanced environment that feels energetic and ready for your next gathering.



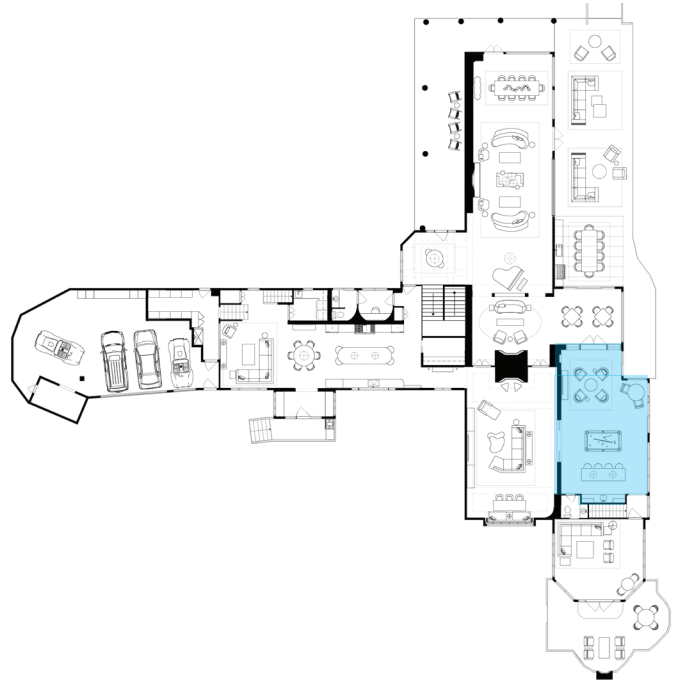


7. MAHJONG ROOM



8. BILLIARDS ROOM

A Golf Club House-inspired retreat, influenced by the timeless character of a masculine lounge. Rich wood tones, tailored millwork, and a central bar establish a moody, grounded place designed for living your best life.

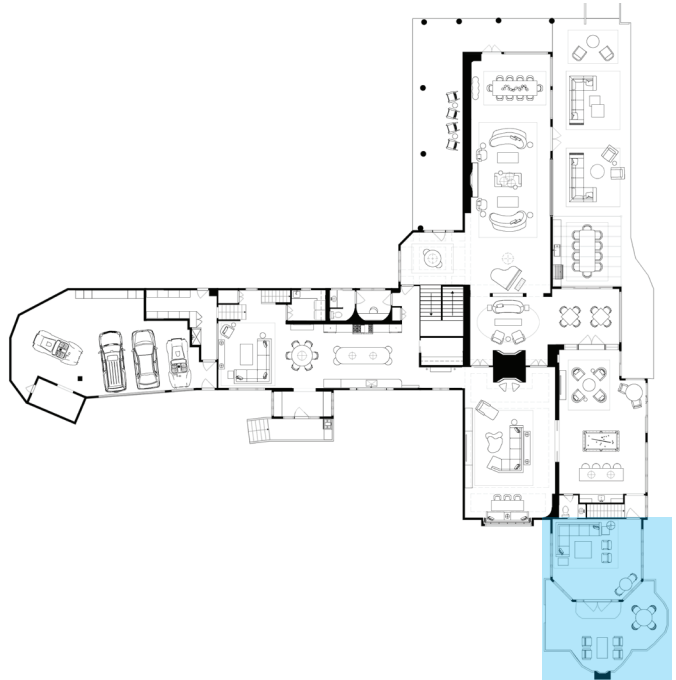
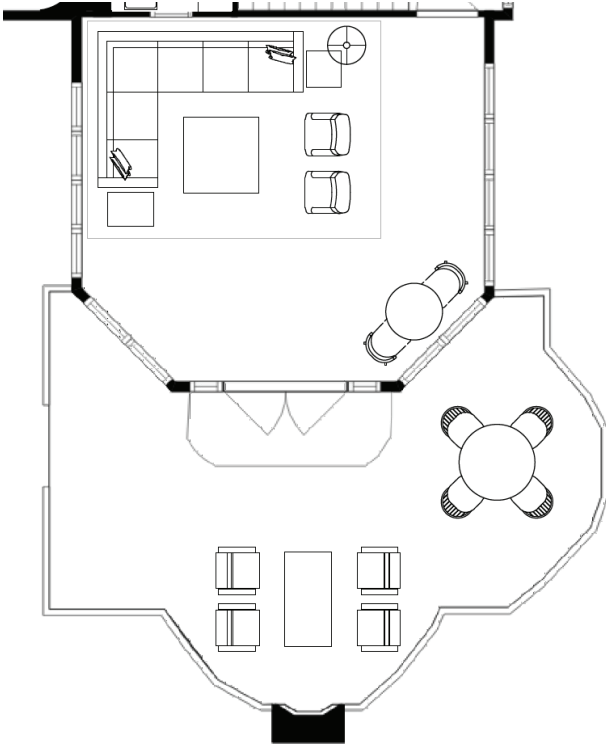




8. BILLIARDS ROOM

9. SOLARIUM & PATIO

The space unfolds as a light-filled sanctuary defined by soft color, texture, and a strong connection to the outdoors. Painted finishes, woven textures, and botanical elements create a fresh, airy palette, while expansive glazing floods the space with natural light.

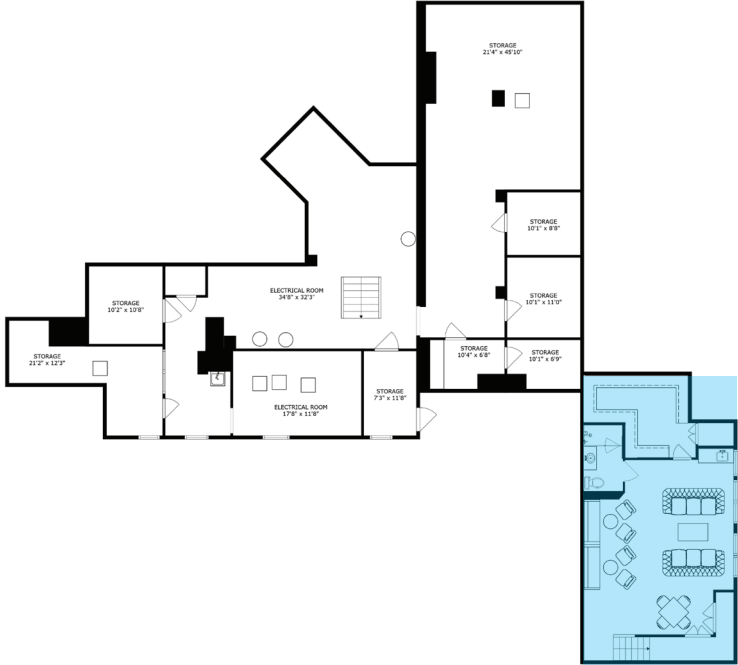
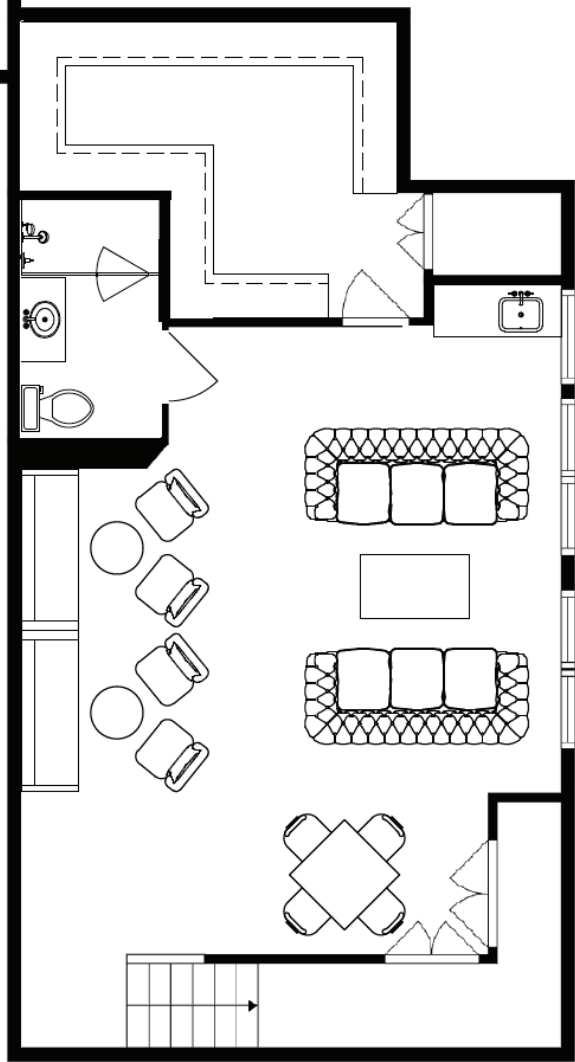




9. SOLARIUM & PATIO

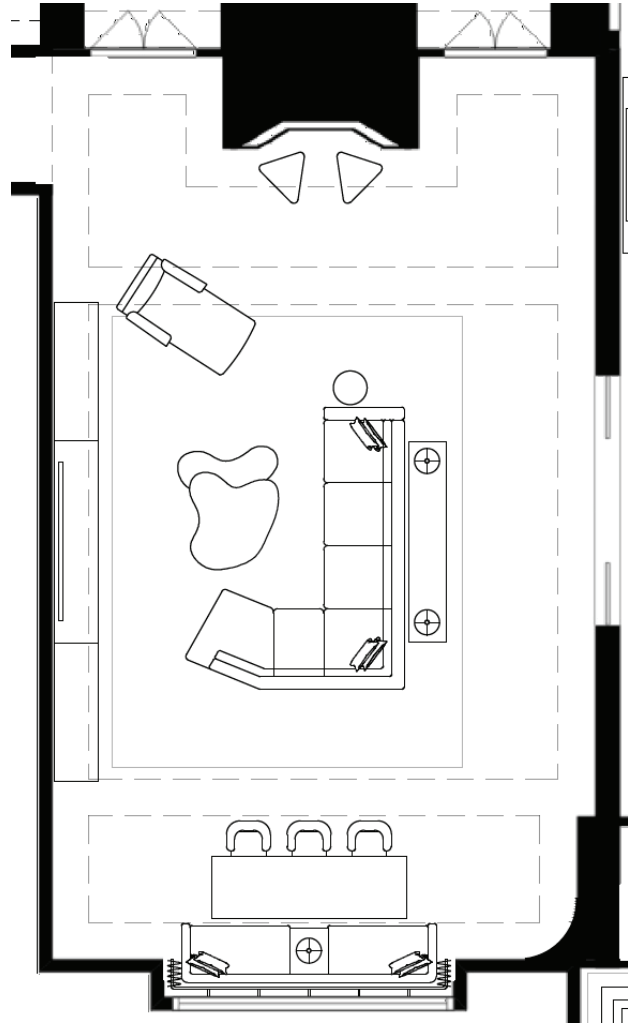
10. SPEAKEASY

Escape into a private space of your own featuring a private lounge and wine room. An intimate, immersive retreat layered in rich materials and low, ambient lighting. Deep tones of tobacco and midnight blue, tactile finishes, and curated details create a sense of escape. Designed to feel tucked away, personal, and quietly indulgent.



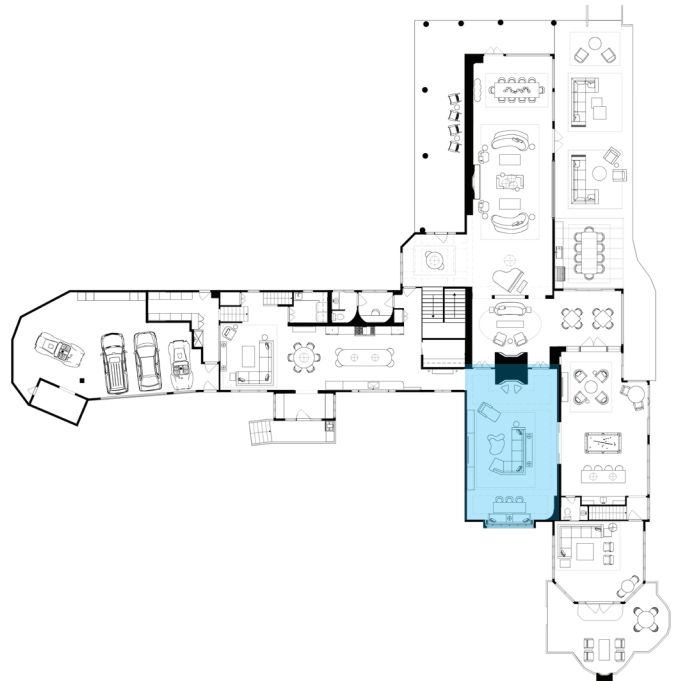


10. SPEAKEASY



11. GREAT ROOM

The central gathering space is designed as a relaxed heart of the home, Casual, welcoming, and deeply connected to its surroundings. Kick your feet up, unwind, and take in the grounds through dramatic windows that draw the landscape in. Warm wood wraps the room through a linear planked ceiling and a grand cabinet for collected family treasures. A space that feels both expansive and grounded—supporting everyday living with an elevated ease.



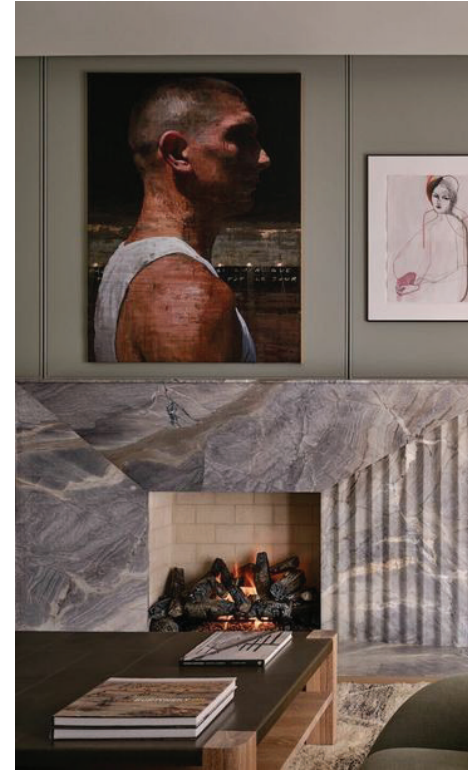


RENDERING

11. GREAT ROOM

27 | 1125 LONGVALLEY ROAD

LAUREN
COLLANDER
INTERIORS



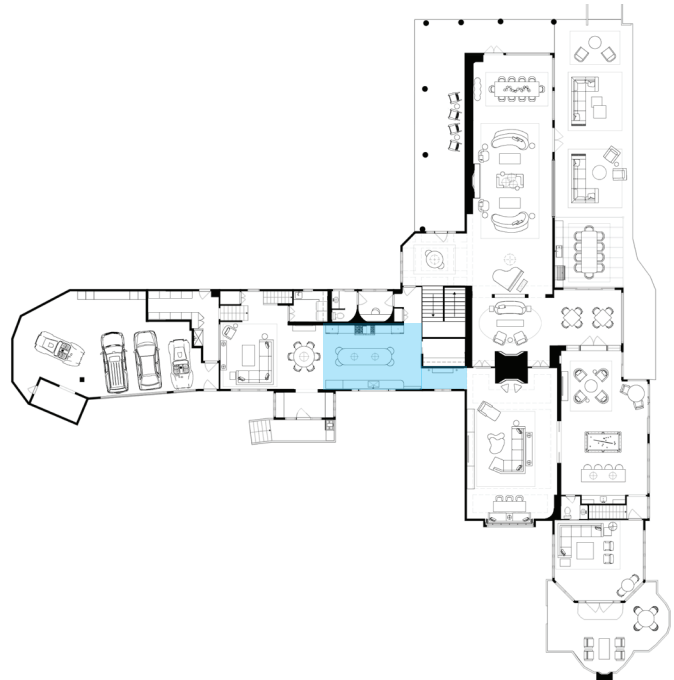
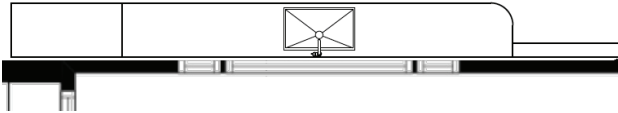
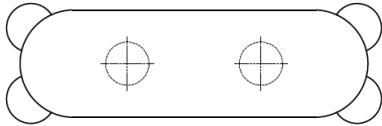
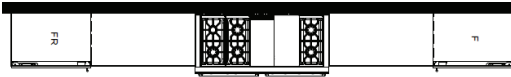
11. GREAT ROOM



11. GREAT ROOM

12. KITCHEN

The kitchen is opened up to feel expansive, fluid, and unrestricted, marking the start of a more private family wing. A dramatic window anchors the composition, balanced by a sculptural metal hood wall and central island. Reeded detail added to cabinetry and tailored stone surfaces complement the light mineral colored island. The result is a refined, highly functional hub where clean lines and warm materials support everyday living and entertaining.





RENDERING

12. KITCHEN

31 | 1125 LONGVALLEY ROAD

LAUREN
COLLANDER
INTERIORS



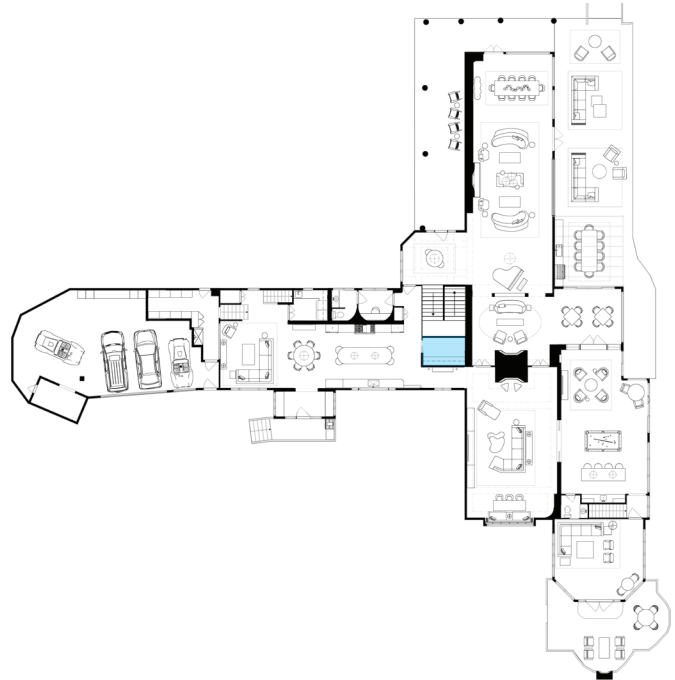
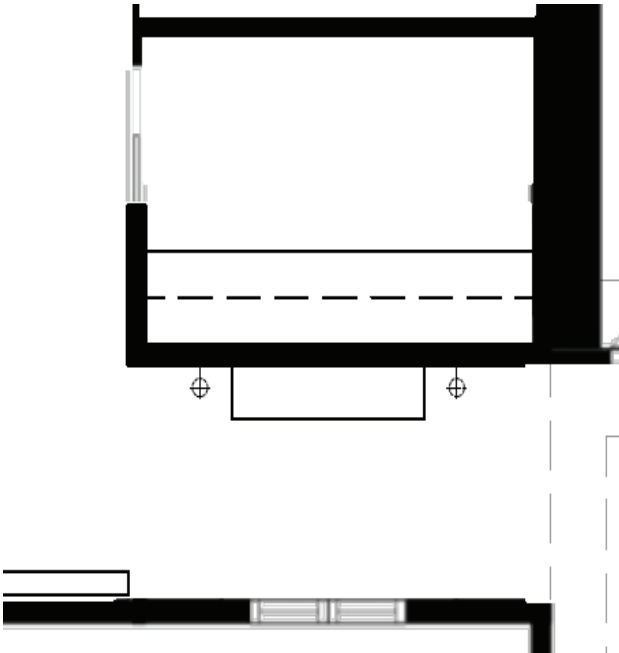
12. KITCHEN



12. KITCHEN

SCULLERY

A concealed extension of the kitchen focused on efficiency and organization. Streamlined storage, durable finishes, and a thoughtful layout allow the main kitchen to remain visually clean and curated. We have shifted the walls of this space to allow for a larger single scullery and a wider, more inviting transition from great room to kitchen.

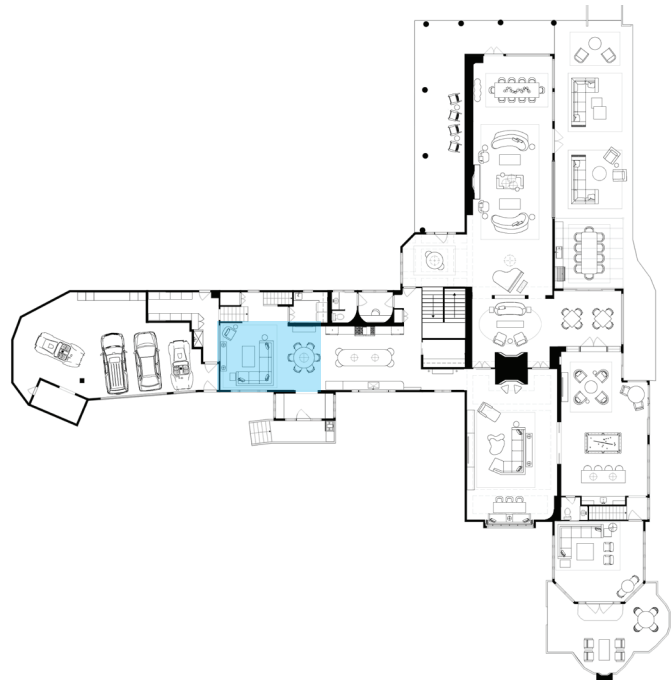
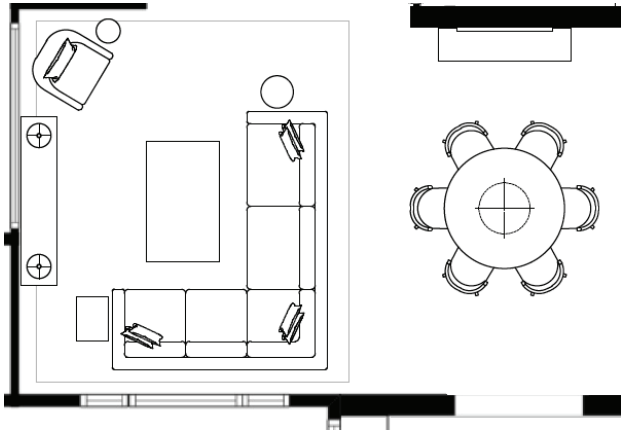




SCULLERY

13. BREAKFAST NOOK & 14. FAMILY ROOM

A light-filled, everyday retreat anchored by soft blue tones and layered textures, the space feels fresh yet approachable for busy daily life. The color palette reflects the surrounding landscape and shifts beautifully with the natural light. Designed for morning rituals with natural materials and clean-lined furnishings that feel both timeless and approachable.

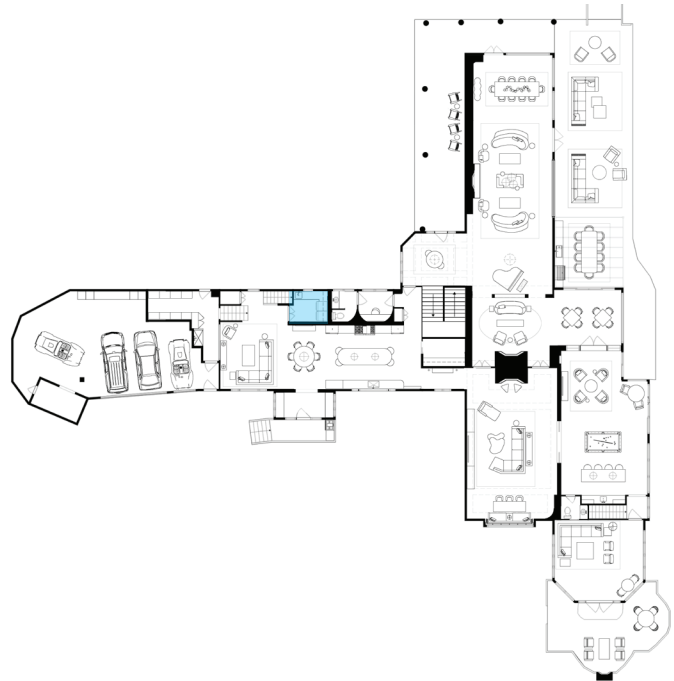
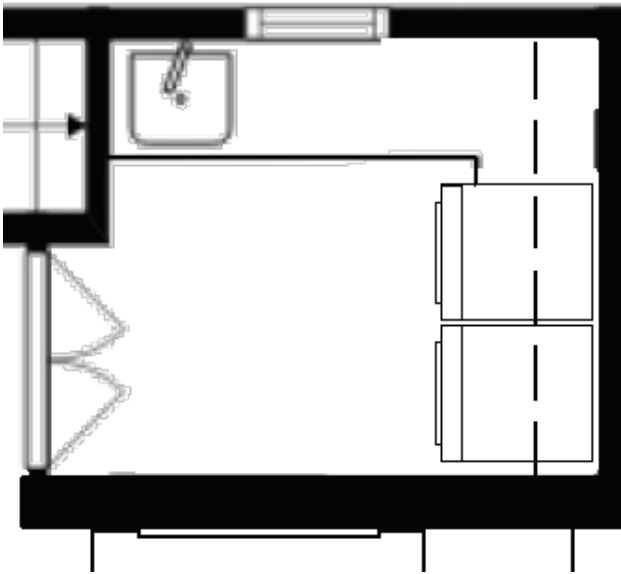




13. BREAKFAST NOOK & 14. FAMILY ROOM

15. LAUNDRY

The space is both practical and elevated through clean detailing and thoughtful organization. Streamlined cabinetry and layered finishes ensure the room feels cohesive with the rest of the home while supporting daily function.

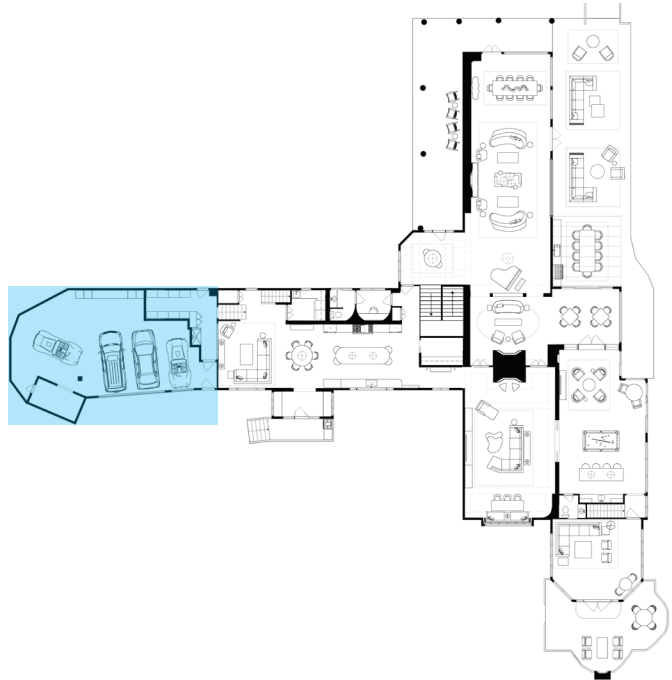
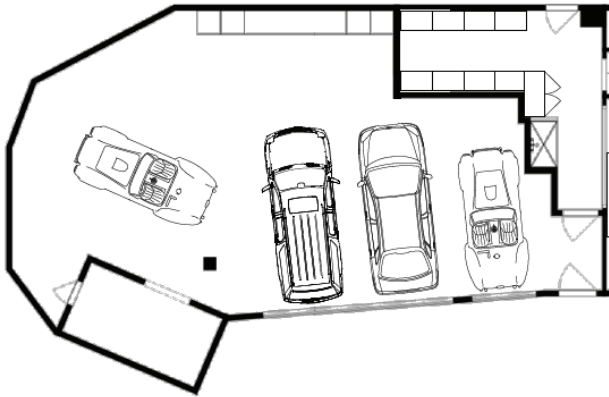


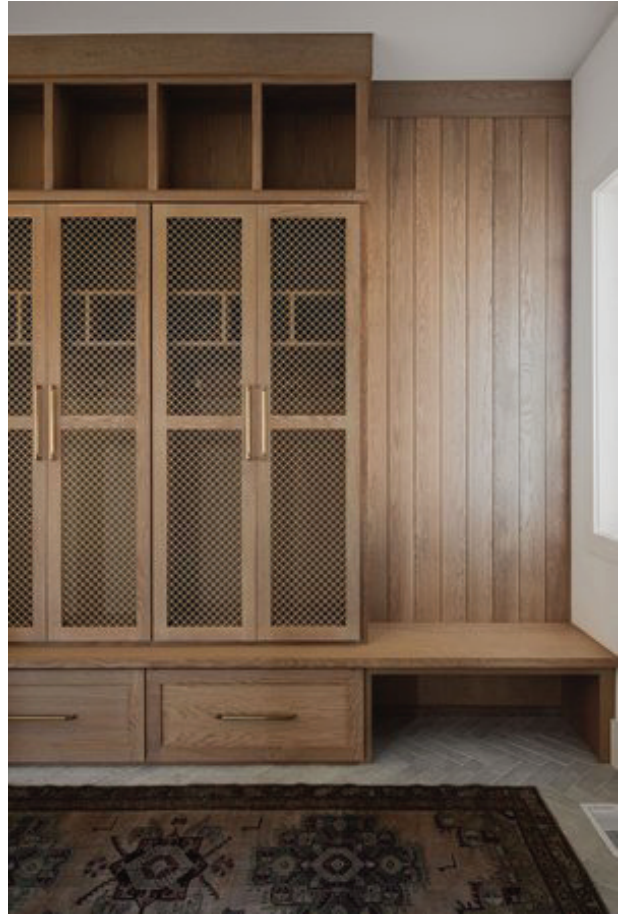


15. LAUNDRY

16. MUDROOM & 17. GARAGE

A highly functional transition space designed with intention. Built-in storage, durable finishes, and clean lines create an organized and visually cohesive entry point for everyday use. A dog wash station adds ease to daily life alongside bold materials that hold up to daily use.

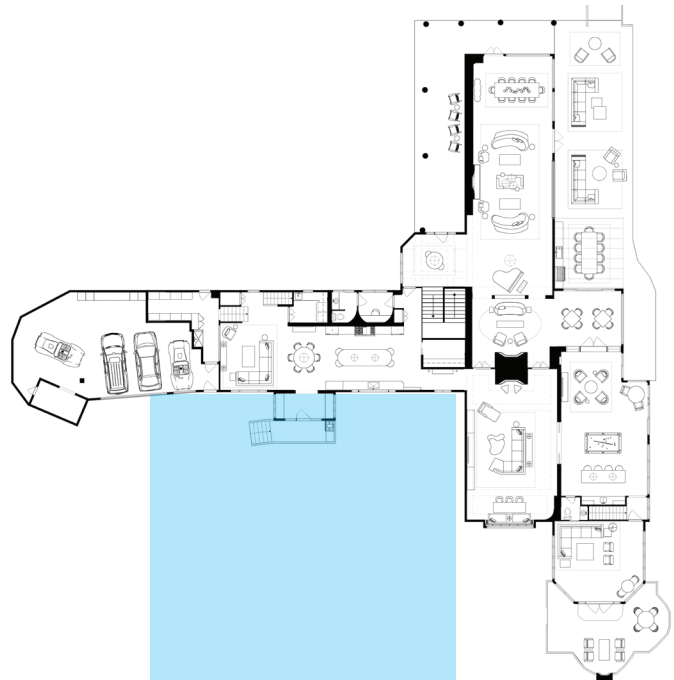




16. MUDROOM & 17. GARAGE

18. EXTERIOR & 19. PRIVATE ENTRANCE

The pickleball courtyard is designed as a dynamic arrival space where recreation and daily function seamlessly coexist. A refined, durable surface allows it to operate as both driveway and court, with subtle detailing that quietly defines play without overpowering the design. Framed by landscape and architectural edges, it becomes an energized setting for activity, and everyday living.

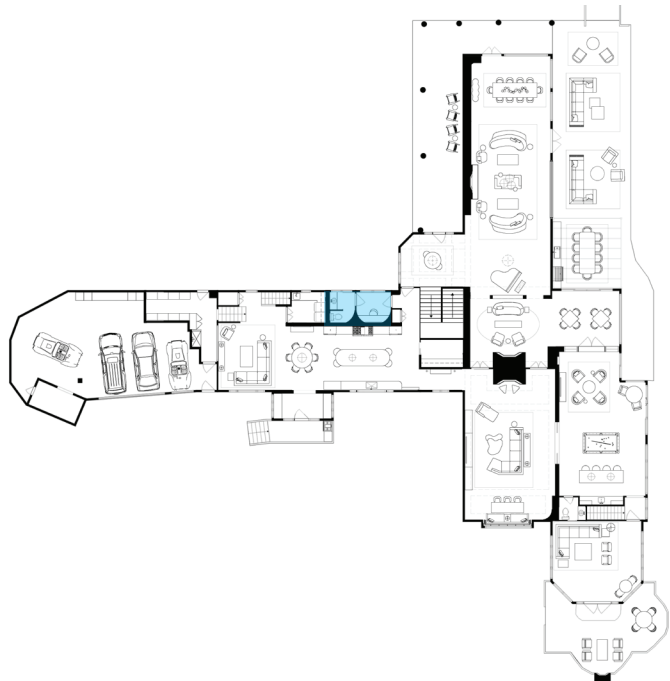
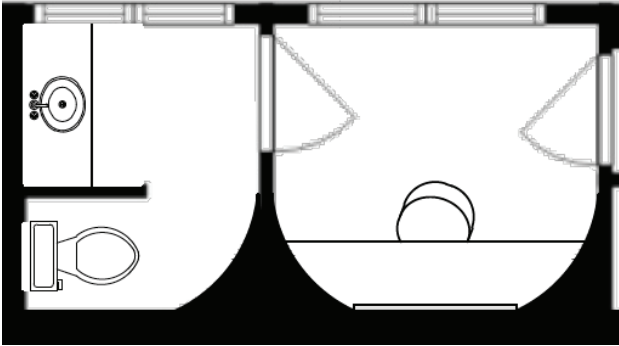


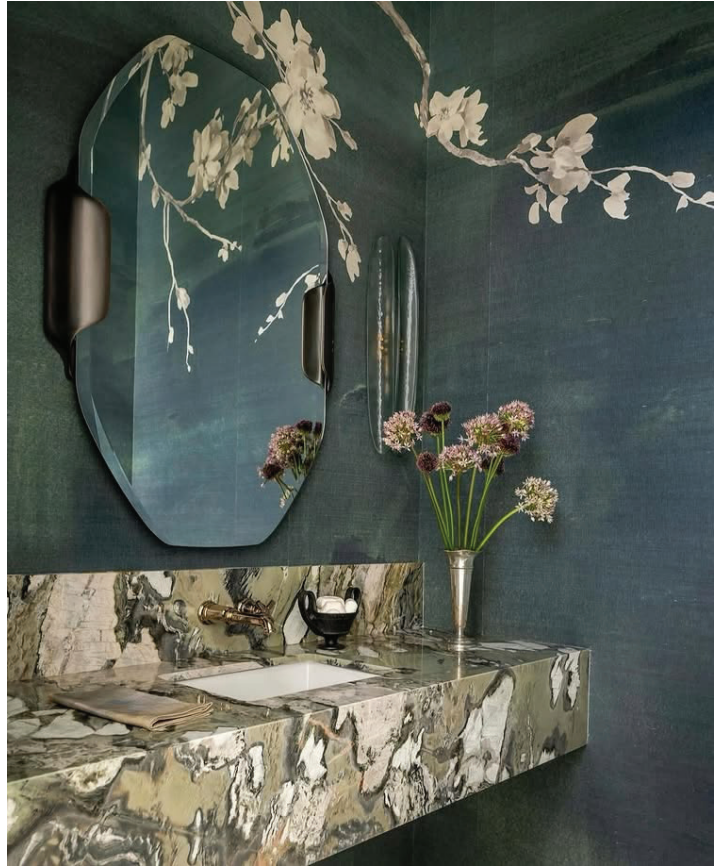


18. EXTERIOR & 19. PRIVATE ENTRANCE

20. POWDER ROOM & VANITY

A detail-driven moment within the home where finish and texture take center stage. Elevated materials, layered lighting, and expressive elements create a space that feels both refined and memorable. Rich, moody tones and sculptural forms add depth and visual interest, while the interplay of stone, wallcovering, and reflective surfaces creates a layered, immersive experience.

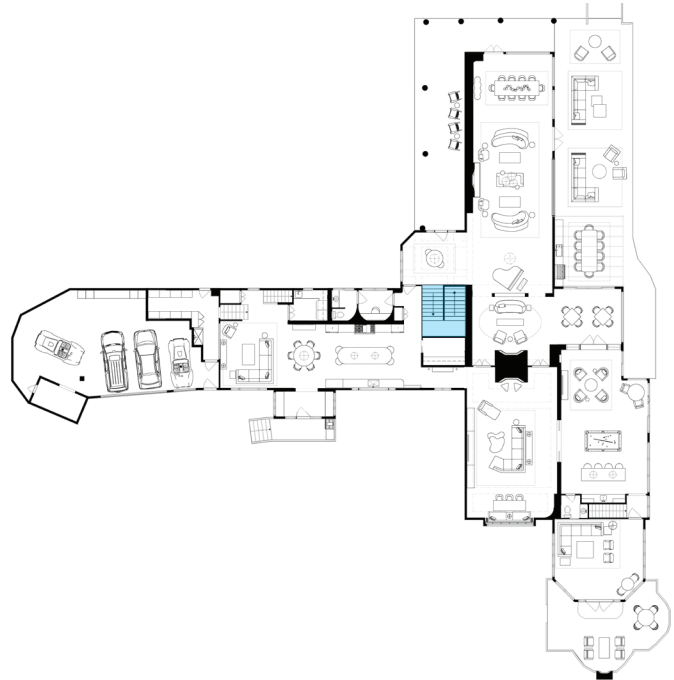
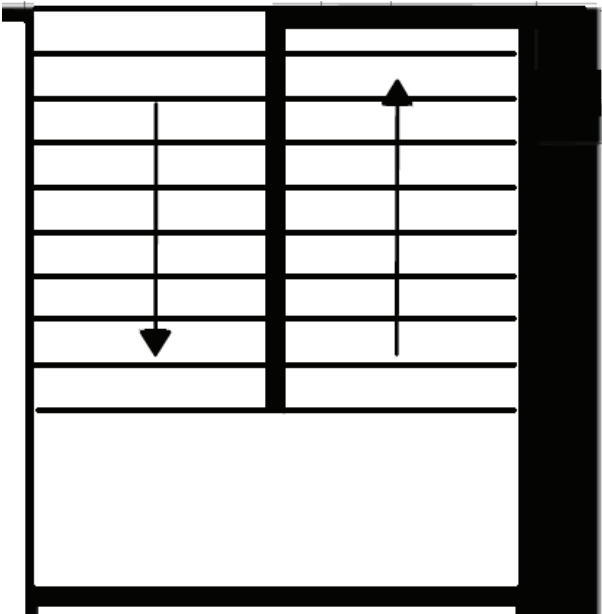


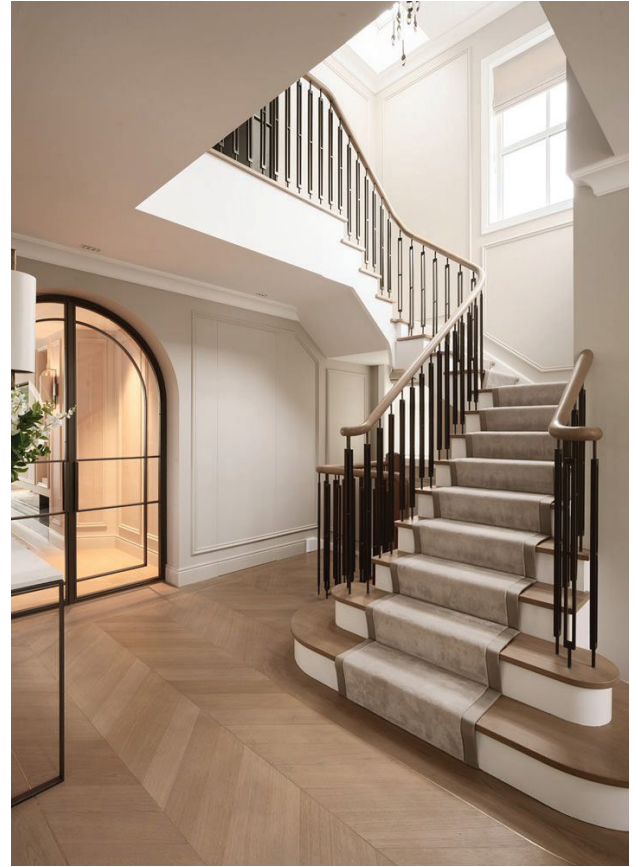


20. POWDER ROOM & VANITY

21. STAIRS

A transitional space designed with a major impact. We plan to remove the existing large closet in order to open up the staircase to be a grand, two story space from the wood paneled foyer. Clean lines, soft lighting, and thoughtful detailing create a more open flow between levels while maintaining visual interest.

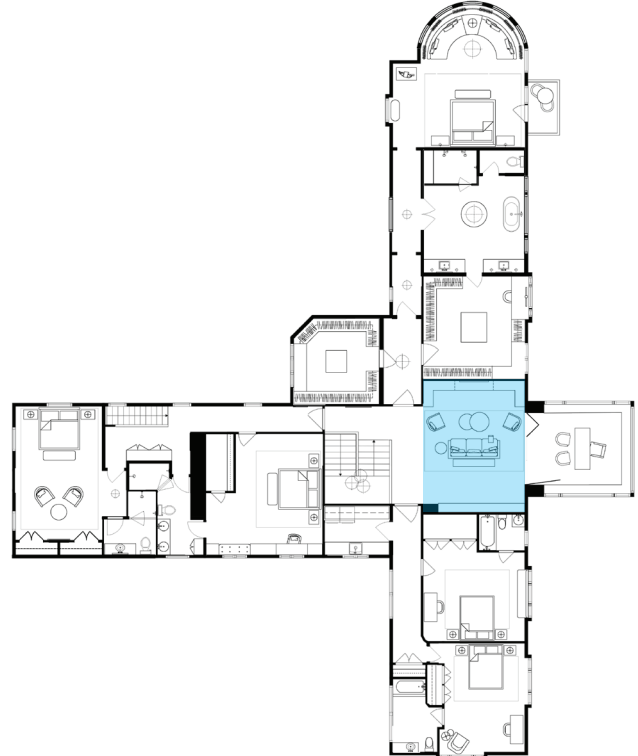
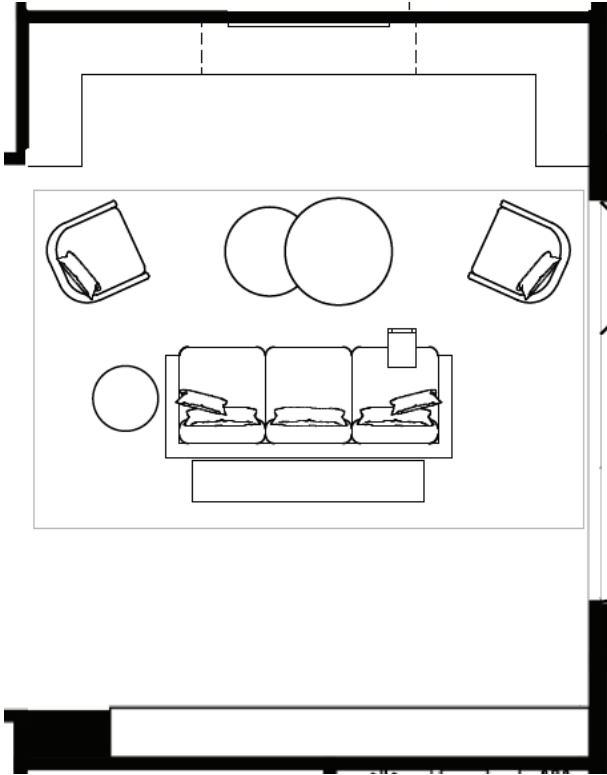


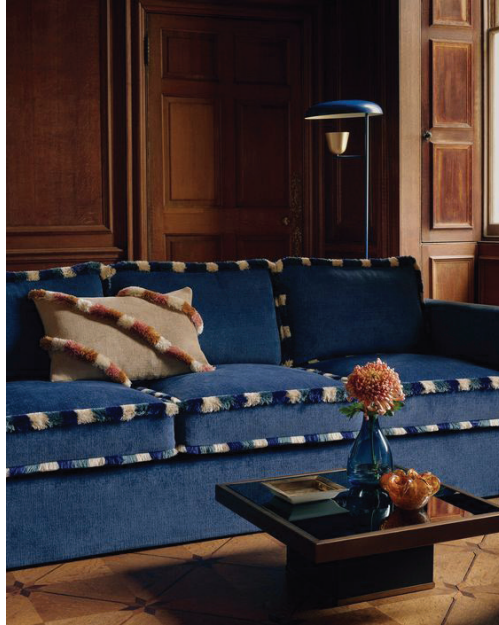


21. STAIRS

22. FAMILY LIBRARY

A calm, restorative retreat centered on comfort and quiet luxury. Soft textures, layered neutrals, and tailored furnishings create a serene environment that feels both elevated and deeply personal. A rounded lounge overlooks the pool and pond, offering a sculptural moment of pause where views, light, and stillness become part of the everyday experience.

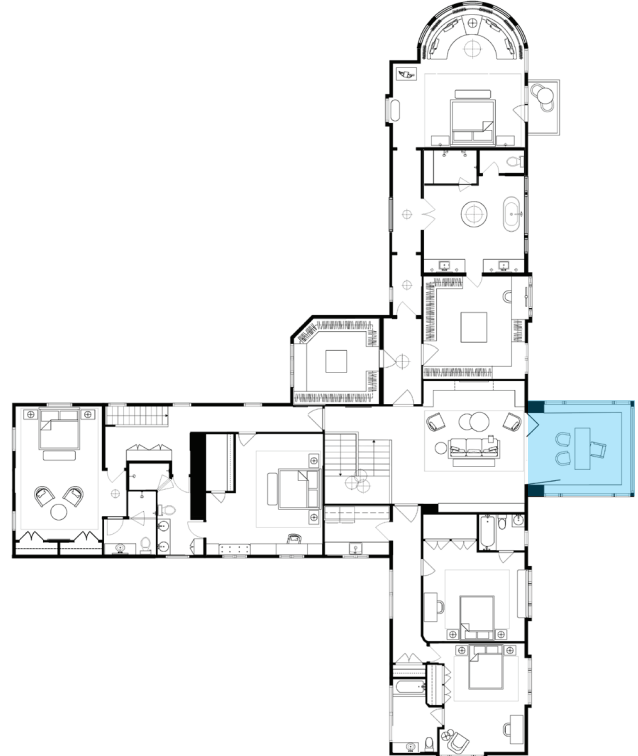
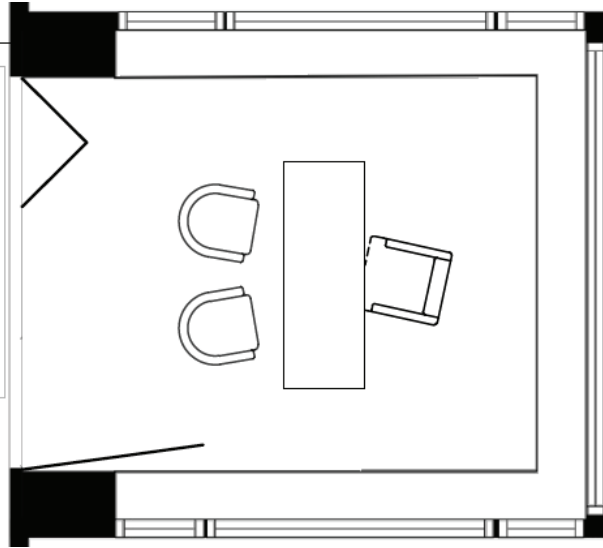


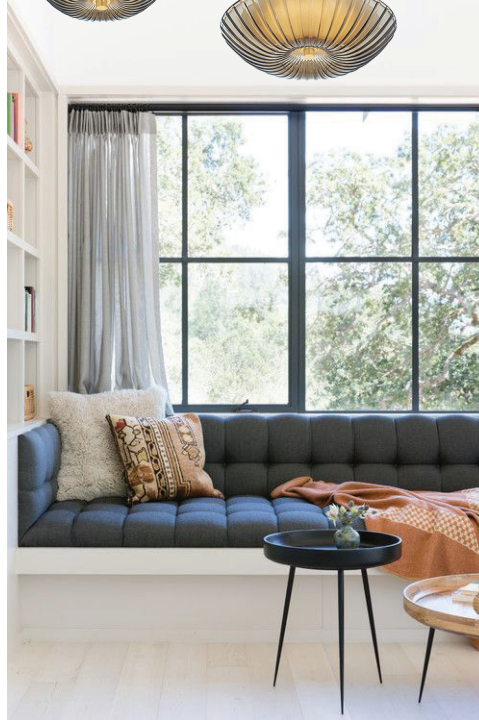


22. FAMILY LIBRARY

23. OFFICE

The workspace is refined and designed for focus and creativity. Warm materials, clean lines, and a thoughtful layout create a balanced environment that supports productivity. Subtle layering and tailored details add depth without distraction, allowing the space to feel both calm and quietly inspiring throughout the day.

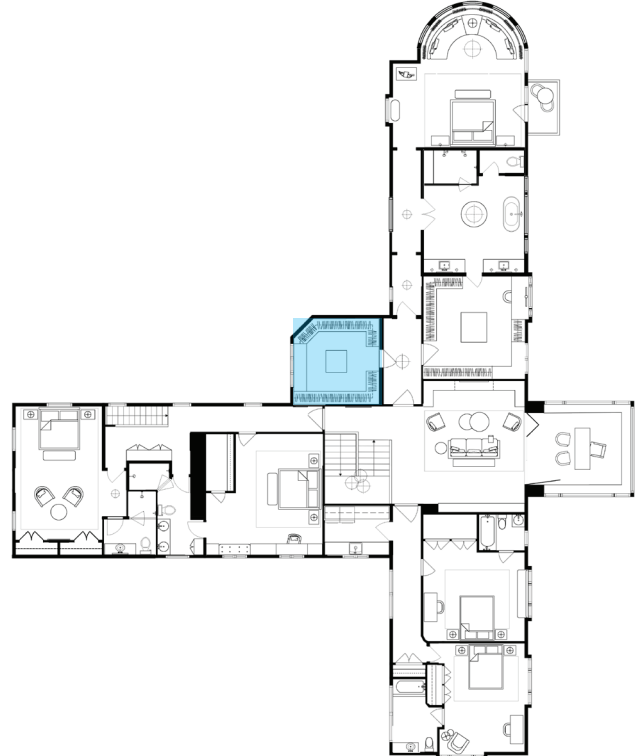
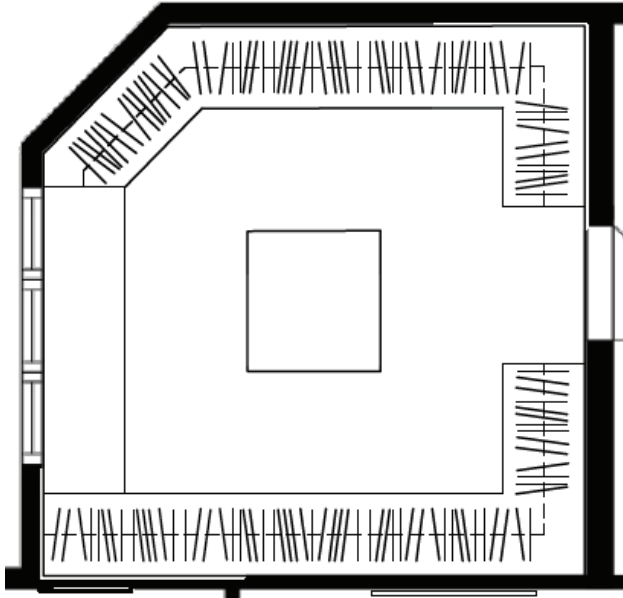




23. OFFICE

24. CLOSET

A streamlined, tailored environment focused on clarity and efficiency, where clean lines, structured storage, and understated materials create a polished, highly functional space. Thoughtful organization elevates the everyday routine, turning storage into an experience that feels calm and effortlessly ordered.

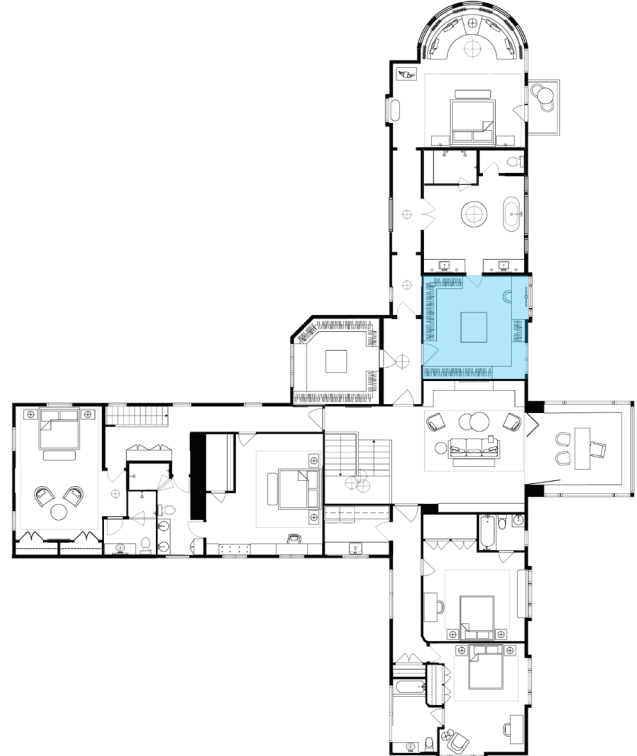
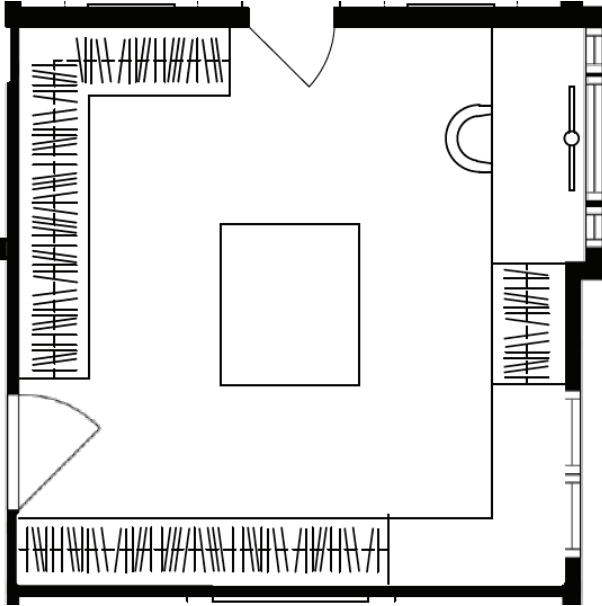




24. CLOSET

25. CLOSET

A boutique-inspired dressing space layered with thoughtful organization and elevated finishes. Custom storage, soft lighting, and refined detailing create a functional yet indulgent experience, enhanced by tailored millwork and a sense of quiet sophistication.

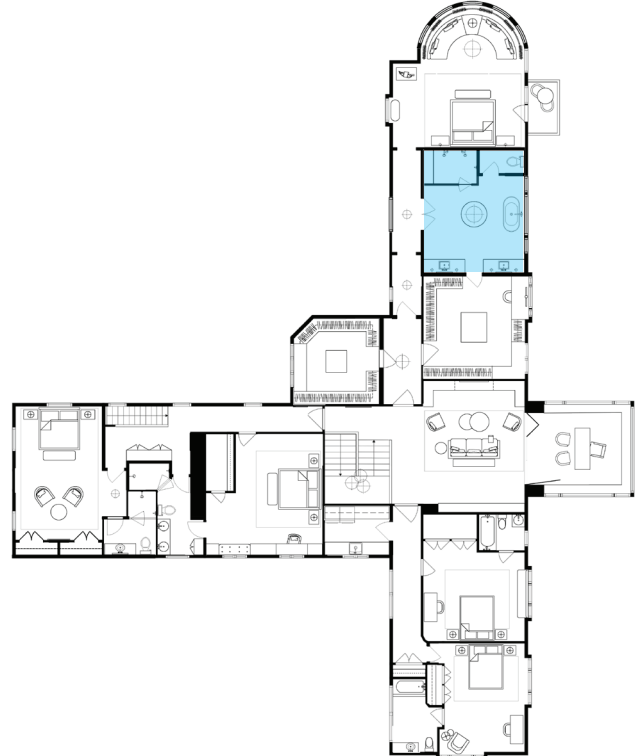
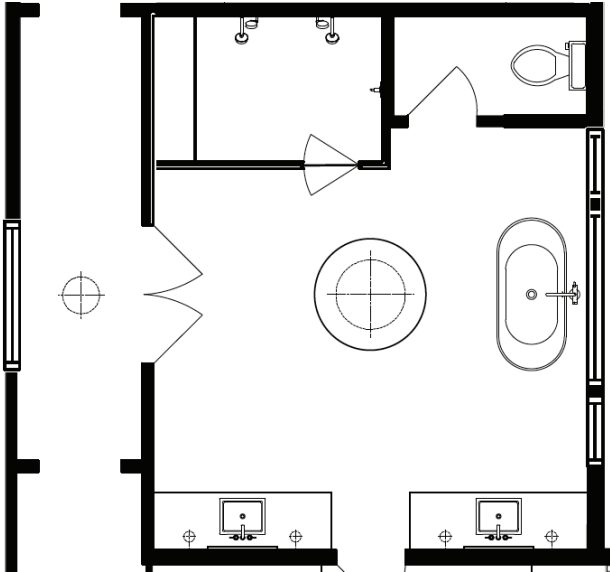


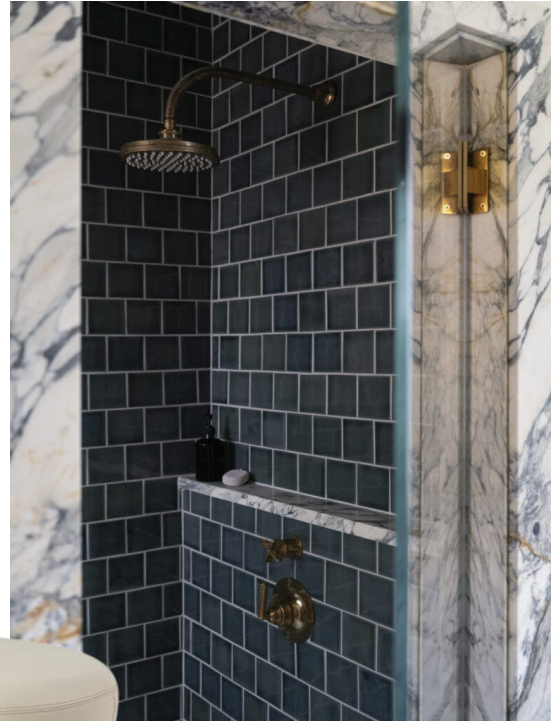


25. CLOSET

26. PRIMARY BATHROOM

A spa-like environment defined by clean finishes and natural materials. Thoughtful lighting, refined detailing, and a restrained palette create a space designed for relaxation and daily ritual. Soft, airy tones are layered with subtle texture, bringing depth and definition while maintaining a calm, serene atmosphere.

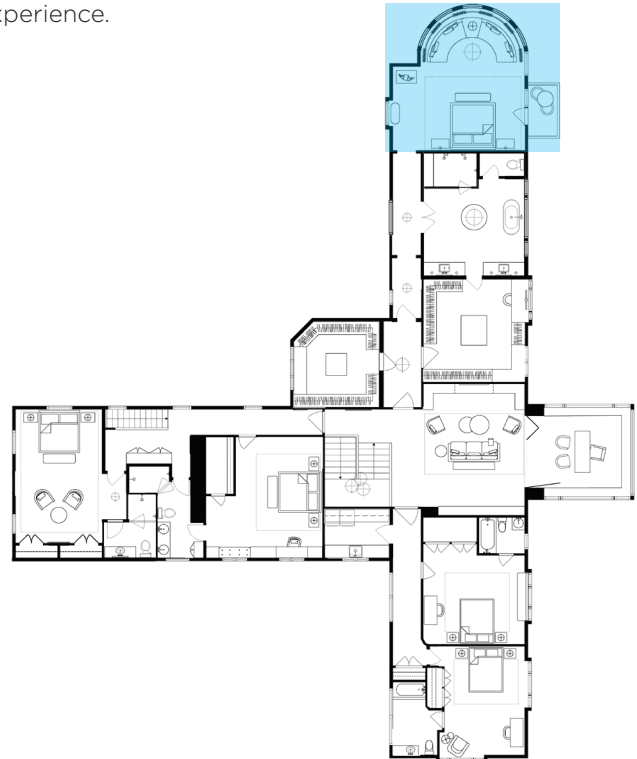
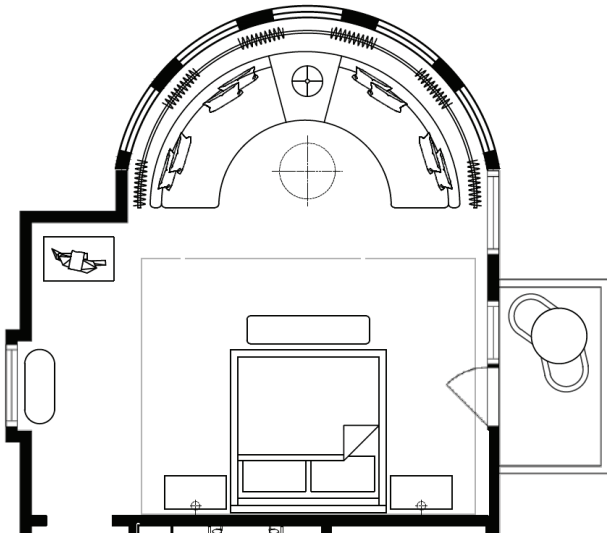




26. PRIMARY BATHROOM

27. PRIMARY BEDROOM

This calm, restorative retreat is centered on comfort and quiet luxury. Soft textures, layered neutrals, and tailored furnishings create a serene environment that feels both elevated and deeply personal. A rounded lounge overlooks the pool and pond, offering a sculptural moment of pause where views, light, and stillness become part of the everyday experience.





27. PRIMARY BEDROOM

59 | 1125 LONGVALLEY ROAD

LAUREN
COLLANDER
INTERIORS



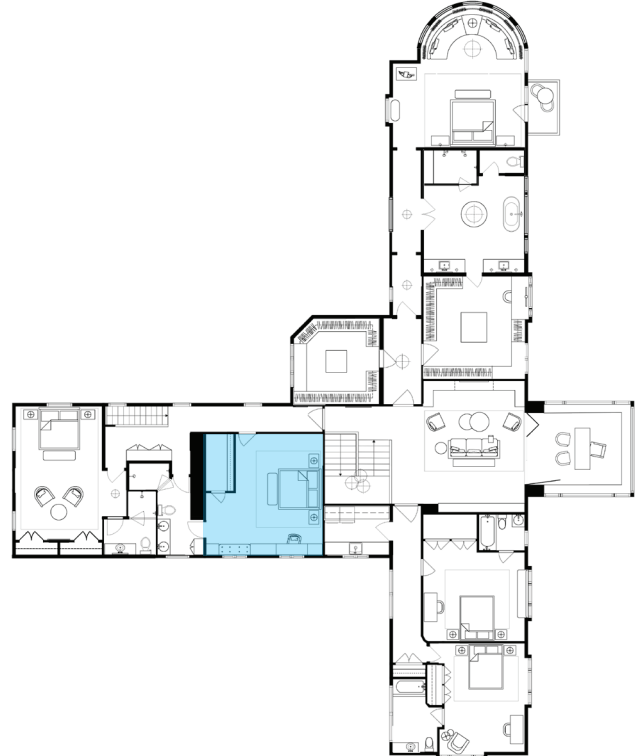
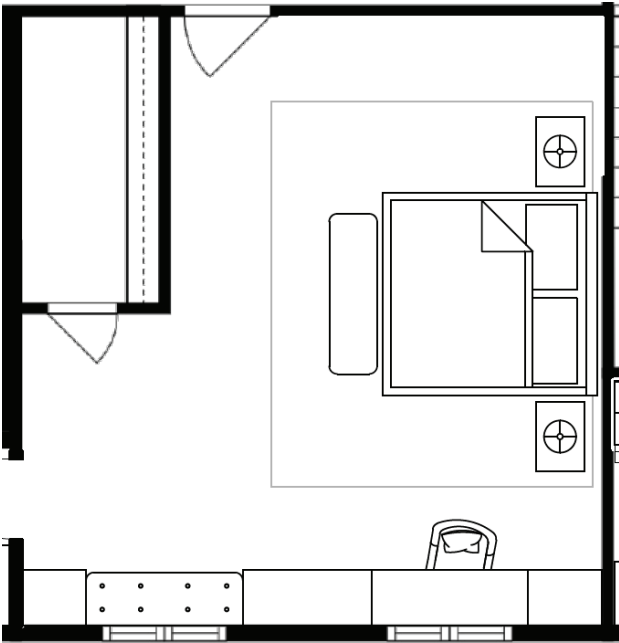
27. PRIMARY BEDROOM



27. PRIMARY BEDROOM

28. KID'S BEDROOM

A playful yet elevated environment designed to grow over time. Soft textures, layered color, and flexible furnishings create a balance between fun and sophistication, complemented by integrated seating and thoughtful built-ins that add both function and character.

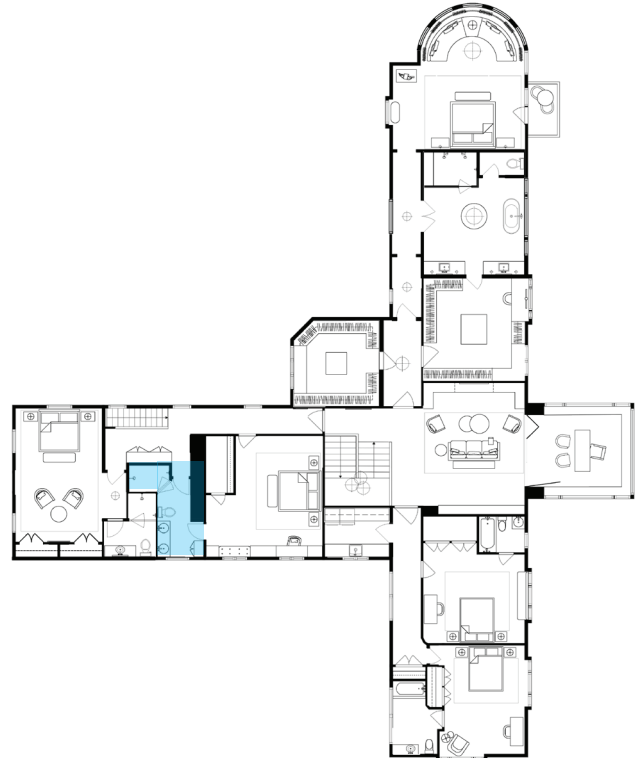
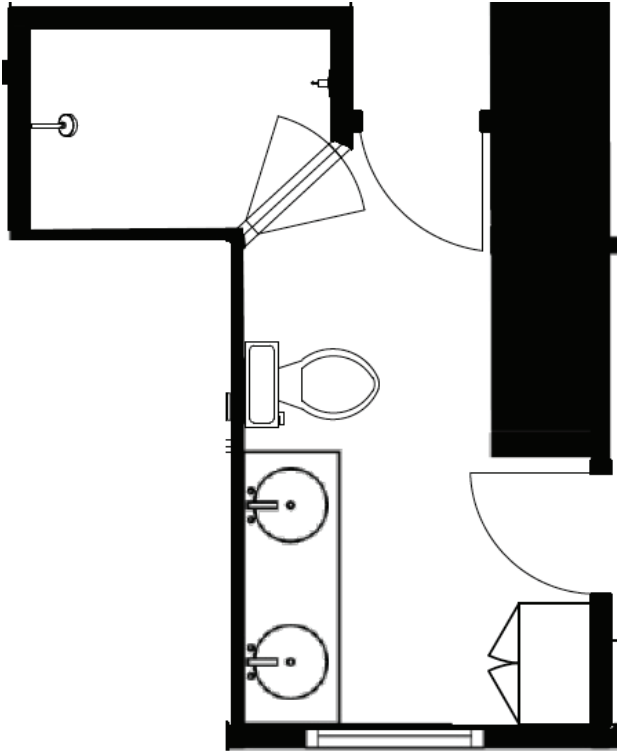




28. KID'S BEDROOM

29. BATHROOM

A bright, functional space designed with durability and ease in mind. Clean finishes and thoughtful detailing create a polished yet approachable environment, complemented by playful moments that add character without compromising the refined, cohesive feel.

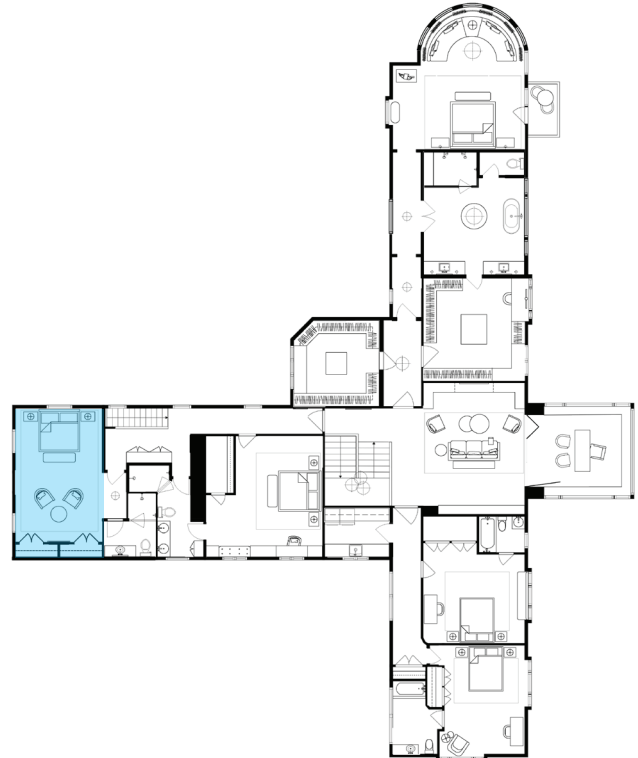
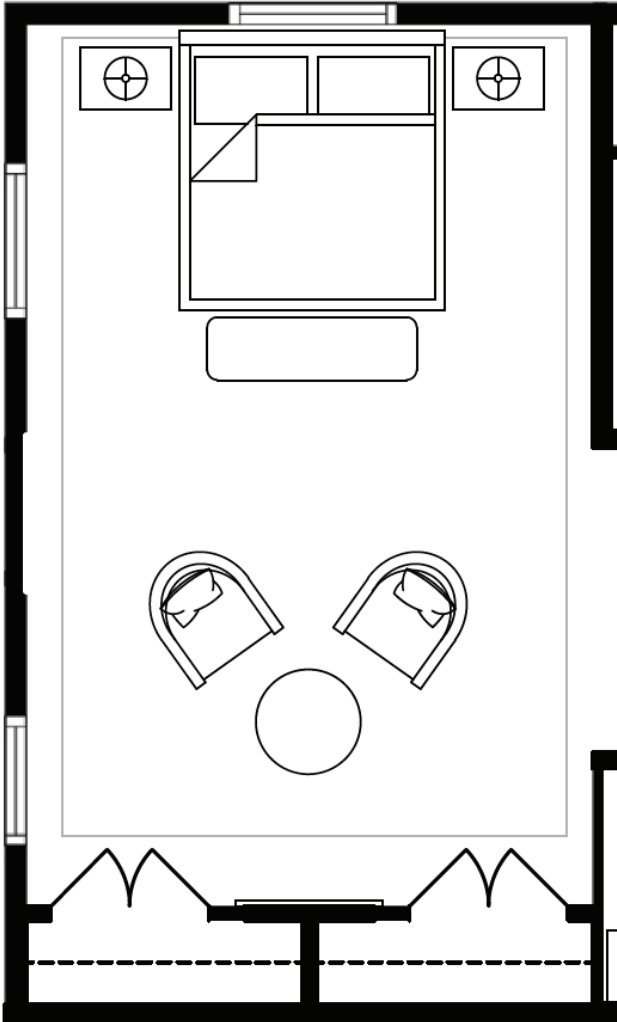




29. BATHROOM

30. KID'S BEDROOM

A thoughtfully balanced space that mirrors the interplay of playfulness and refinement, designed to evolve alongside its occupant. Soft layers of color and texture add depth while keeping the overall feel light and flexible. Whimsical accents are balanced with tailored elements, creating a space that feels imaginative, grounded, and able to grow over time.

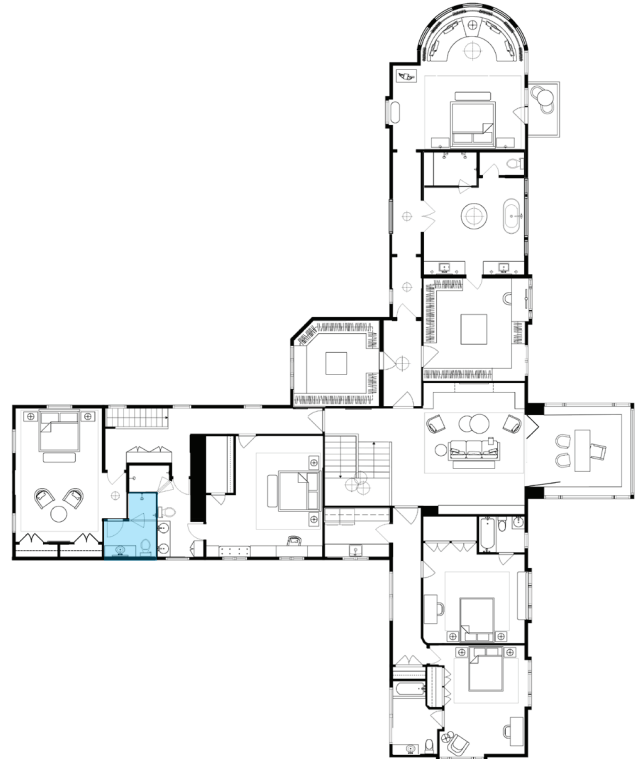
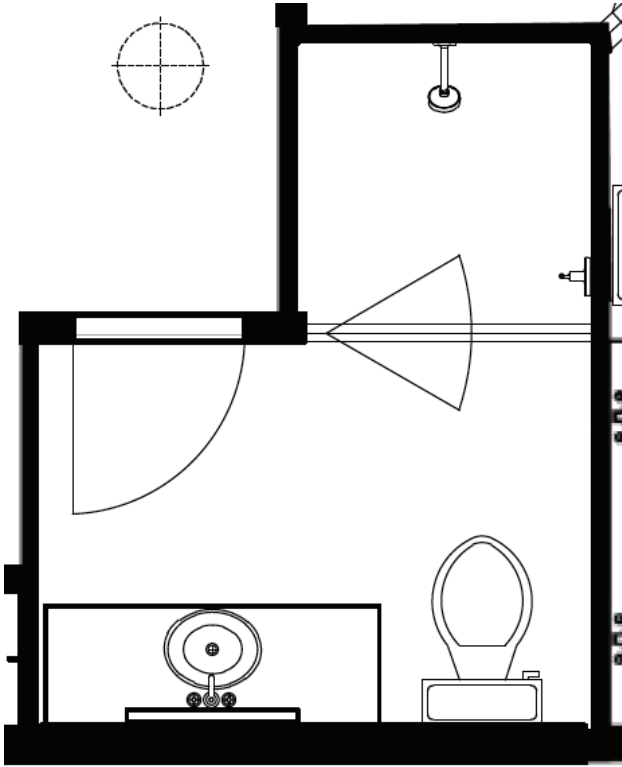




30. KID'S BEDROOM

31. BATHROOM

A cohesive bathroom that extends the bedroom's palette and quiet sense of play, using durable materials and clean detailing. Soft tonal shifts and subtle purple accents maintain continuity while keeping the space fresh and functional. The result is polished, practical, and visually connected to the adjoining room.p

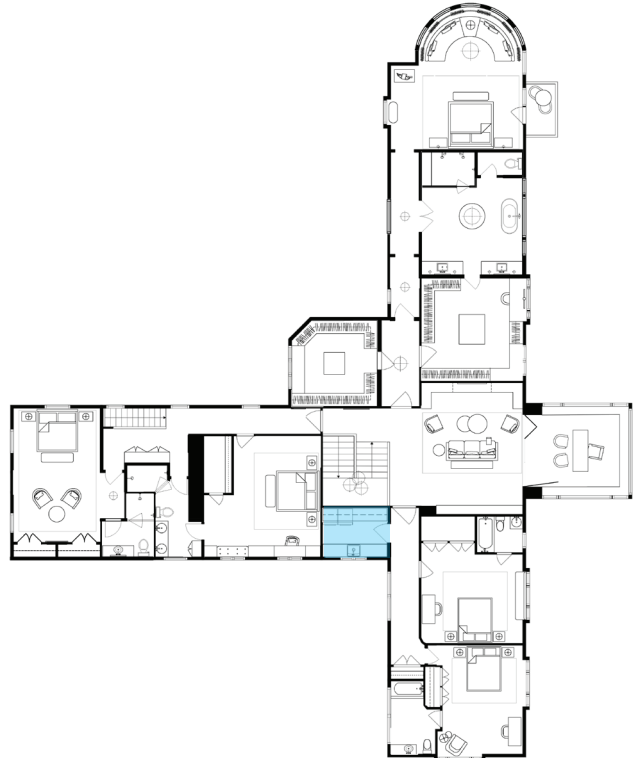
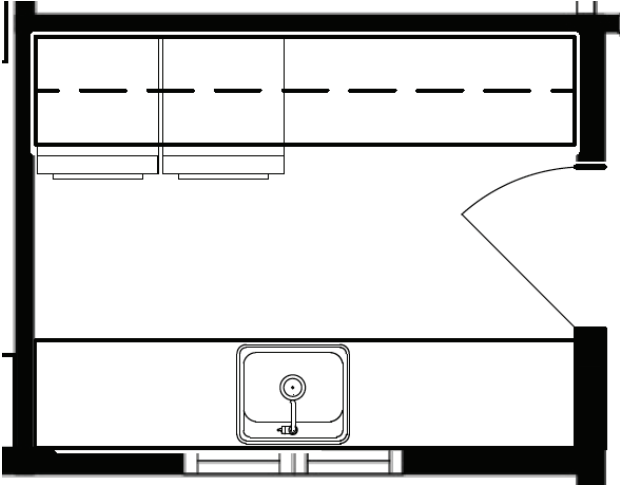




31. BATHROOM

32. LAUNDRY & KITCHENETTE

A conveniently located, highly functional space designed with efficiency in mind. Clean detailing and thoughtful organization ensure ease of use while maintaining cohesion with surrounding spaces.

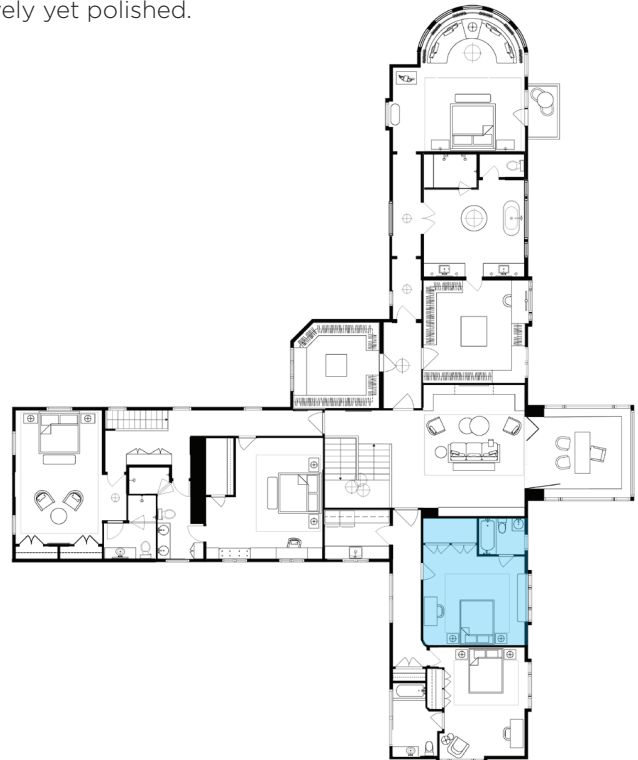
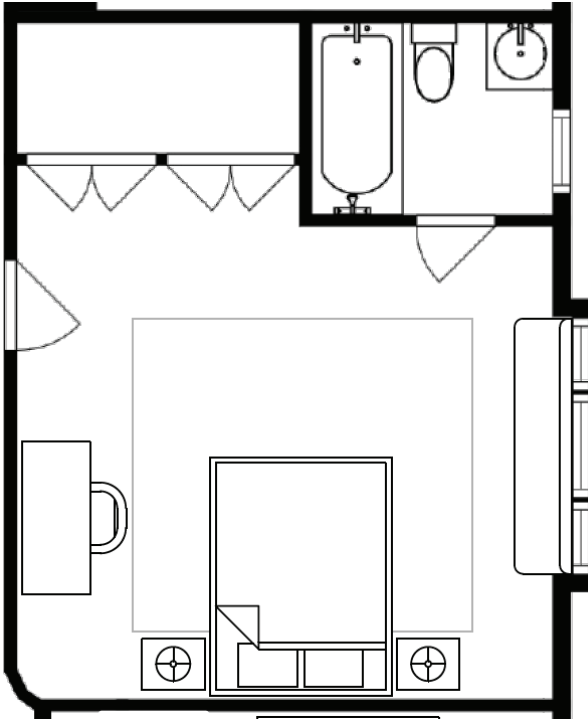




32. LAUNDRY & KITCHENETTE

33. GUEST BEDROOM & 34. BATHROOM

A vibrant guest suite defined by bright, cheerful energy and patterned detail. Fun wallpaper sets a playful backdrop, while crisp finishes and an en suite layout keep the space feeling intentional and refined. Bold color is balanced with clean forms, creating a welcoming atmosphere that feels lively yet polished.

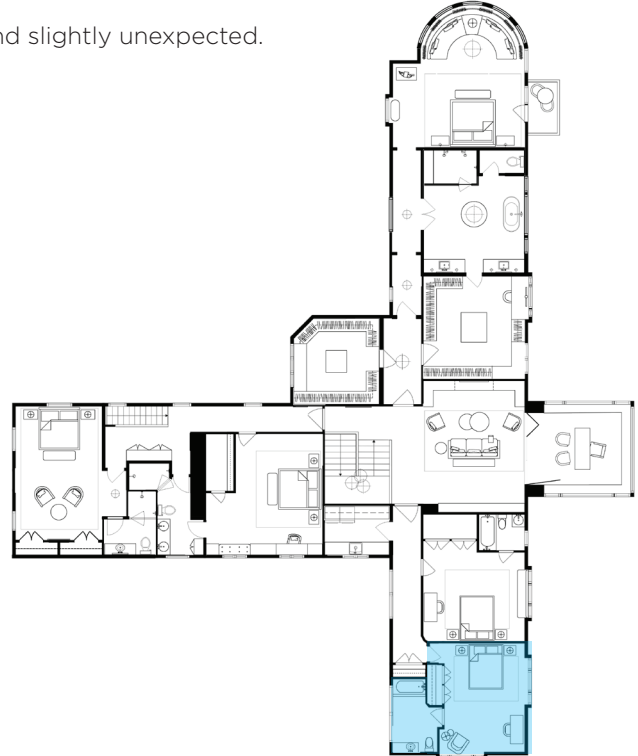
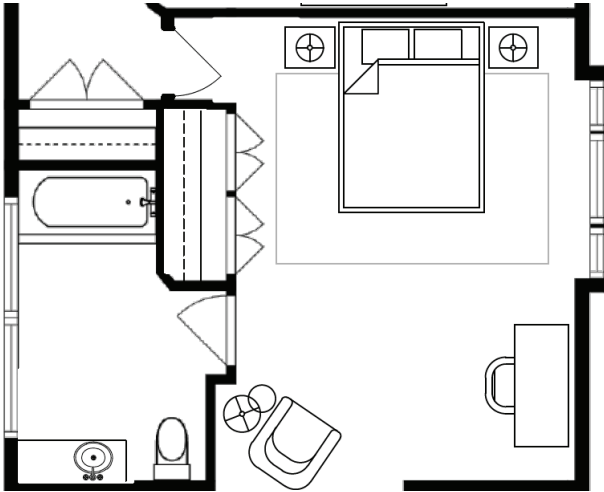


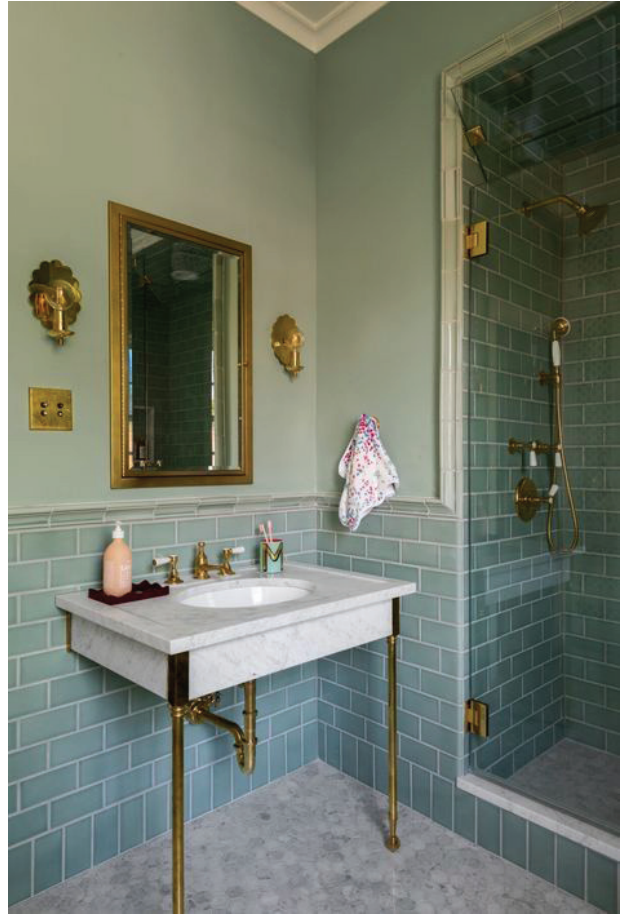


33. GUEST BEDROOM & 34. BATHROOM

35. GUEST BEDROOM & 36. BATHROOM

A playful guest suite rooted in mid-century character, blending color and form in a relaxed, expressive way. A blue-green palette anchors the space while layered tones and graphic elements add personality. The en suite bath continues the same spirit with clean, cohesive detailing, creating a guest experience that feels curated, comfortable, and slightly unexpected.





35. GUEST BEDROOM & 36. BATHROOM



A, PERRY HOMES

At **A. Perry Homes**, we don't simply build residences; we craft the spaces for life's remarkable moments. A custom home by A. Perry Homes is a true expression of distinction. Our architect-led design-build approach is rooted in artistry, intention, and an uncompromising commitment to excellence. We take the time to deeply understand your vision, translating your lifestyle, tastes, and aspirations into a bespoke architectural masterpiece. Our cohesive team of architects, project superintendents, and master craftsmen collaborates seamlessly from initial concept through final reveal. Every element is meticulously considered and expertly executed, resulting in a home that is not only visually striking, but thoughtfully tailored and enduring in its quality. The result is a refined, one-of-a-kind residence; crafted with precision, delivered with integrity, and designed to be lived in beautifully for generations.

AP
A. PERRY HOMES
ARCHITECTS ■ BUILDERS



#1
TEAM
WINNETKA
in 2024*

The **MacPherson Group** was founded to make the Urban to Suburban transition smoother for their buyers and sellers. They offer a variety of concierge services to their clients to assist with any roadblocks in the home purchase and sales environment including: decluttering services, staging, contractors, and advanced marketing. They have a licensed specialist on their team in almost every neighborhood of the North Shore Suburbs, Western Suburbs, and Chicago Neighborhoods. Clients benefit from first-hand knowledge of products, pricing and negotiation.

LAUREN COLLANDER
INTERIORS



MACPHERSON
GROUP

@properties®

CHRISTIE'S
INTERNATIONAL REAL ESTATE